

Xesar

Commissioning the Xesar-Online Wall Reader Network
Adapter EXPERT EX9132CST

Imprint

Product code: I.X.EX9132ENT.AN.INB.SEN.LN | 24R1

Version: Xesar 3.2 | 3.2.x

Edition: 06/2024 UK

The original operating manual was written in German.

Publisher

EVVA Sicherheitstechnologie GmbH

Responsible for content

EVVA Sicherheitstechnologie GmbH

This edition shall not longer be valid upon publication of a new system manual.

You can find the latest edition in the EVVA download area:



<https://www.evva.com/uk-en/service/downloads/>

All rights reserved. This system manual must not be reproduced, copied or adapted neither in full or in part using electronic, mechanical or chemical methods or any other procedures without the written consent of the publisher.

This manual is based on the state of the art at the time of creation. The content of the manual has been checked for consistency with the described hardware and software. Nevertheless, deviations cannot be excluded. We shall not assume any liability for technical or printing errors and their potential consequences. However, the data in this system manual is revised regularly and corrections are incorporated.

All trademarks and industrial property rights reserved. We reserve the rights to make adaptations and update the document without prior notification.

Table of contents

1	INTRODUCTION.....	4
1.1	General legal notes	4
1.2	EVVA Support.....	5
1.3	Explanation of symbols	6
2	COMMISSIONING THE XESAR-ONLINE WALL READER NETWORK ADAPTER EXPERT EX9132CST.....	7
2.1	PC configuration	7
2.2	Commissioning a Xesar network adapter	9
2.3	Status page	10
2.4	RS485/422.....	11
2.5	Network.....	12
2.6	Resetting a network adapter.....	13

1 Introduction

This document is an excerpt from the Xesar 3.1 system manual.

The products and/or systems described in the Xesar system manual must exclusively be operated by persons that have been adequately qualified for the corresponding task. Qualified personnel is able to identify risks when handling products/systems and prevent potential hazards on the basis of their expertise.

1.1 General legal notes

EVVA shall conclude the contract for the use of Xesar on the basis of the EVVA GTC (General Terms and Conditions) and EVVA GTC (General Terms and Conditions) for the software for the product.

You can call up the EVVA General Terms and Conditions and EVVA General Terms and Conditions:



<https://www.evva.com/uk-en/legal-notice/>



Please note that the use of the Xesar locking system may trigger legal obligations, in particular data protection authorisation, reporting and registration obligations (e.g. when setting up an information network system), as well as employee co-determination rights when used in companies. The user shall bear the responsibility for the legally compliant use of the product.



The above information must be observed in accordance with the manufacturer's liability for its products as defined in the Product Liability Act and must be communicated to operators and users. Non-compliance releases EVVA from any liability.

Unauthorised use, repair work or modifications not authorised by EVVA and improper service may lead to malfunctions and must therefore be avoided. Changes not expressly approved by EVVA will result in the loss of liability, warranty and separately agreed guarantee claims.



Keep the system components away from small children and pets. Risk of suffocation due to small parts that can be swallowed.



EVVA provides **architects and consulting institutions** with all the product information they need to comply with their information and instruction obligations under the Product Liability Act.

Specialist retailers and installers must comply with the information in EVVA documentation and they must pass on such information to customers, where applicable.

Additional information can be found in the Xesar product catalogue:



<https://www.evva.com/uk-en/xesar>

1.2 EVVA Support

With Xesar, you have a sophisticated and tested locking system at your disposal. If you require additional support, please contact your EVVA partner directly.

You can access the list of certified EVVA Partners here:



<https://www.evva.com/uk-en/retailer-search/>

Activate the “Electronics Partner” filter option to search specifically for EVVA partners who sell electronic EVVA locking systems and have qualified specialist knowledge.



<http://support.evva.at/xesar/en/>








General information on Xesar can be found here:



<https://www.evva.com/uk-en/xesar>

1.3 Explanation of symbols

The following symbols are used in the system manual to support illustration:

Symbol	Meaning
	Attention, risk of material damage in the event of non-compliance with the corresponding safety measures
	Notices and additional information
	Hints and recommendations
	Avoidance of errors or error messages
	Options
	Links
	Steps with instructions for action

2 Commissioning the Xesar-Online Wall Reader Network Adapter EXPERT EX9132CST



Check that you have the appropriate model in use as per the setup guide before configuring the network adapter.

Additional network adapter commissioning instructions:



<https://www.evva.com/uk-en/service/downloads/>

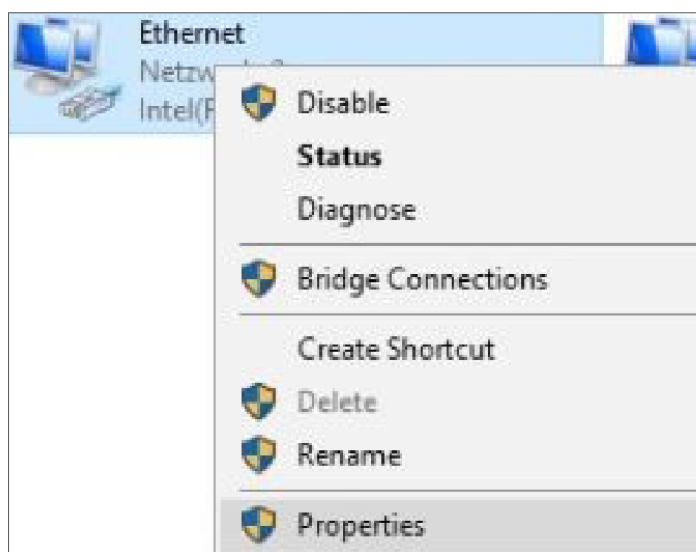
Please contact your EVVA technical office if you have any questions or would like to obtain more information.

2.1 PC configuration

Any computer is suitable for configuring the Xesar network adapter. This can also be the PC on which the Xesar software is operated.

Please configure the settings of your PC network adapter before starting to commission the Xesar network adapter. For this purpose, e.g. in Windows 7 or Windows 10, go to Network and Sharing Center > Change adapter settings.

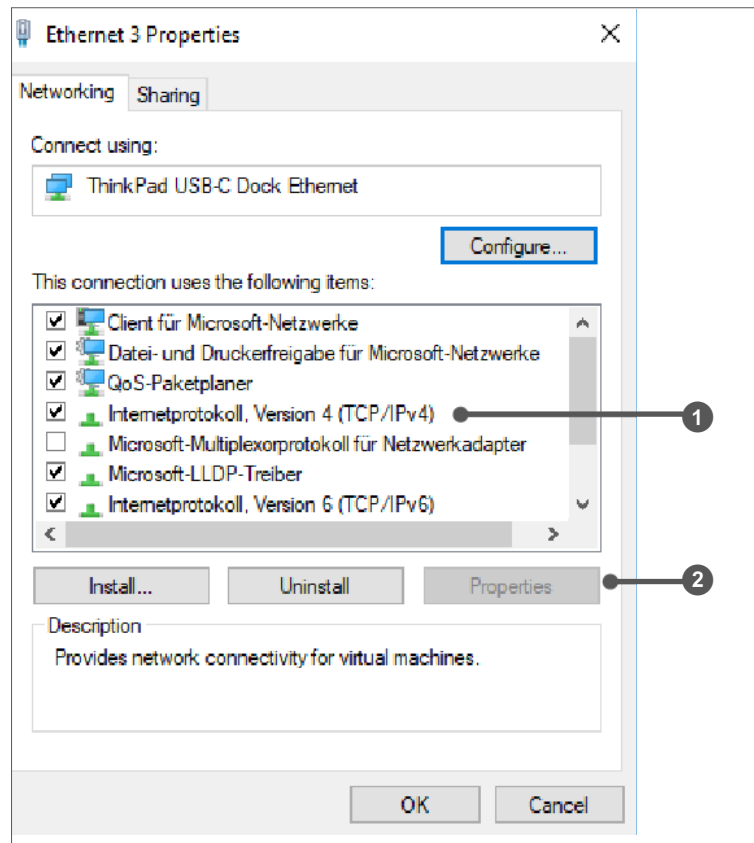
» Open the Settings window (right-click the LAN connection).





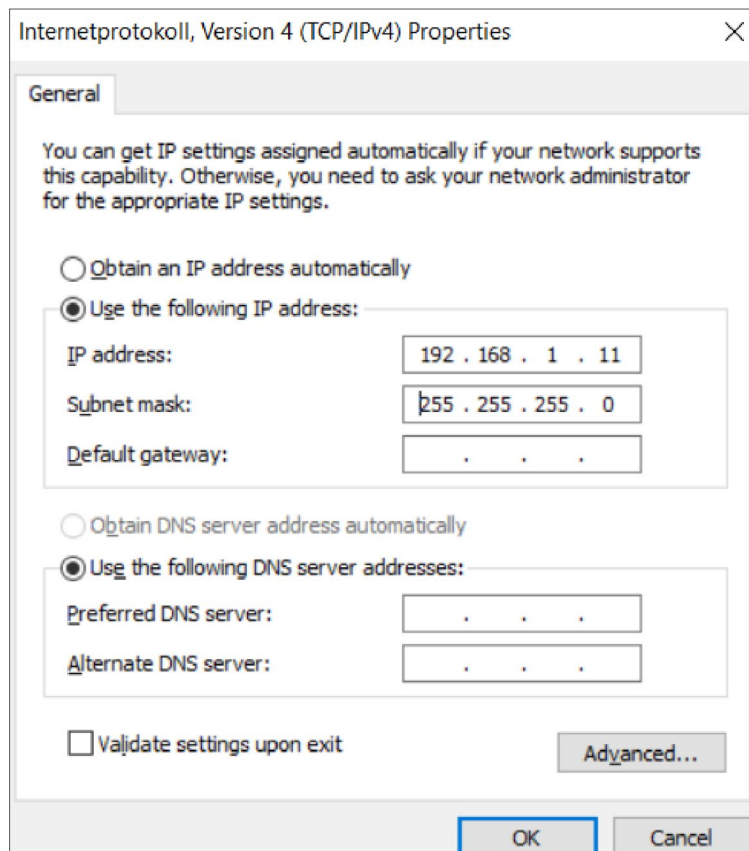
Please note that additional active network connections (WiFi, etc.) may impair communication with the Xesar network adapter. Switch them off if necessary.

- » In the window, select Internet protocol version 4 (TCP/IPv4) ❶ and click Properties ❷.



- » The IP address and the subnet mask of the PC 1 must be configured in order to configure the Ethernet Adapter. Use the following addresses for this purpose:

IP-Adresse: 192.168.1.xxx (1-254)
 Subnetzmaske: 255.255.255.0
 DNS-Server: -




To avoid an IP address conflict, be careful **NOT** to use the default IP address of the Xesar network adapter (**192.168.1.100**).
(If there is an IP address conflict, a connection can not be established.)



Please contact your system administrator if you encounter any issues during setup.

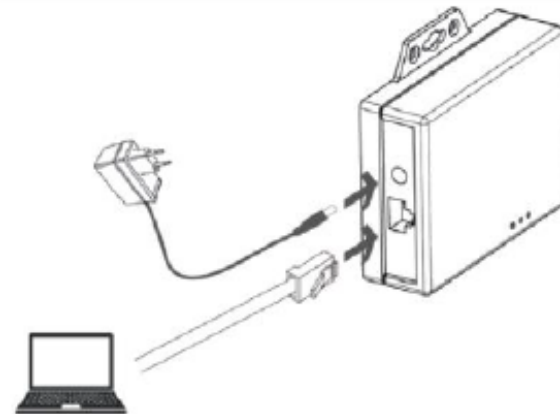
2.2 Commissioning a Xesar network adapter

- » Connect the mains adapter to the Xesar network adapter.

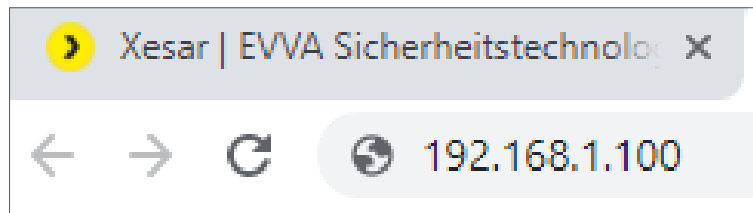
The green, flashing status LED indicates whether the Xesar network adapter is supplied with power.

- » Then connect the Xesar network adapter to the configuration PC.

For this purpose, use an RJ45 LAN cable and make sure the connector engages audibly in the socket.



- » Open the Internet browser on your computer.
- » Enter the standard address of the Xesar network adapter in the browser's address bar – this can be found on the bottom of the device, it is set to **192.168.1.100** by default.



- ! If you cannot open the configuration page, check the firewall settings of your PC, the IP settings, and also the correct wiring of the Xesar network adapter.

You will be directed to the system page of the Xesar network adapter.

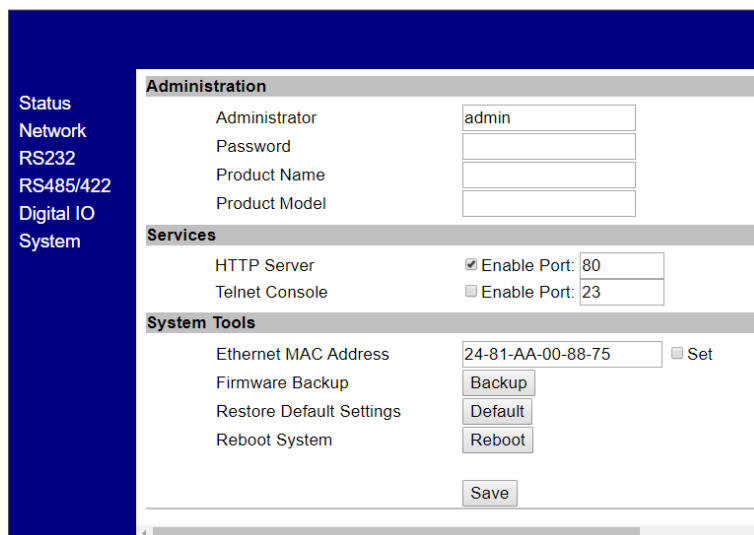
2.3 Status page

- » On the status page, enter a password for security. This is optional and not absolutely necessary. The default administrator name used to login is "admin". No password has been assigned.

» The Device name can be individually configured and it does not influence the device function.

» The Login password restricts access to the device configuration page.

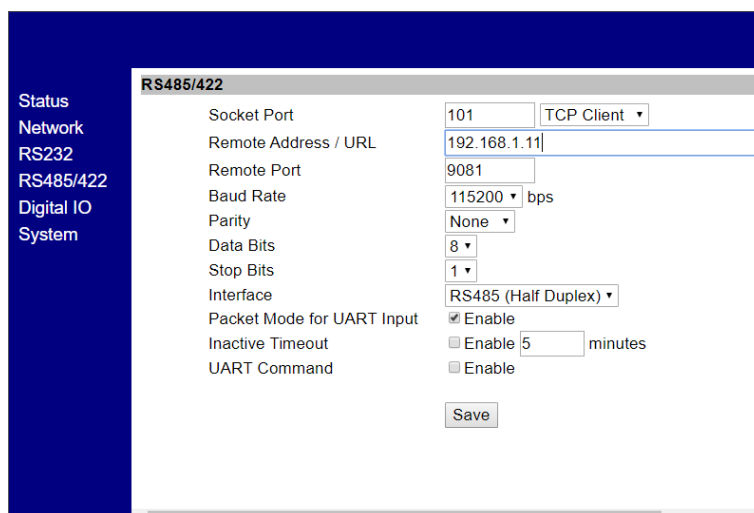
A default password has not been configured.



2.4 RS485/422

» In the "Remote Address /URL" field, enter the IP address of the PC or server on which the Xesar software is installed.

It is responsible for the communication between the Xesar network adapter and the Xesar software. It is important that the remote port (9081 by default) is the same as that specified in the Xesar Installation Manager (OCH Port).



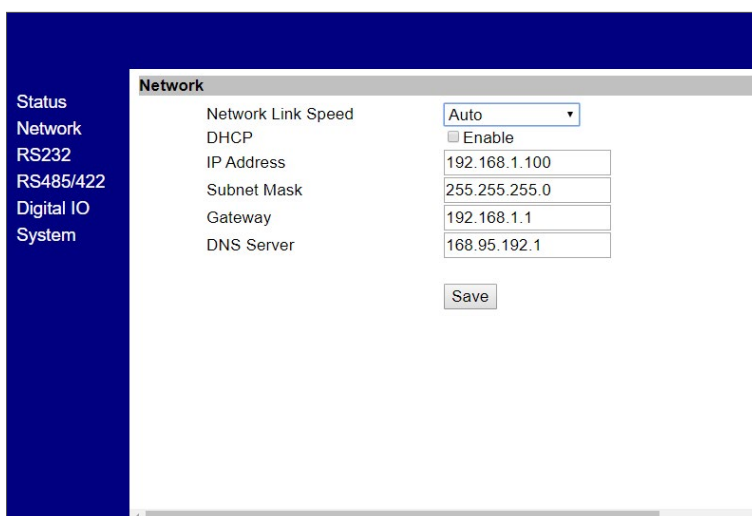
2.5 Network

» On the Network page, the fields are to be filled in as shown below.

The IP address defines the IP address of the Xesar network adapter.

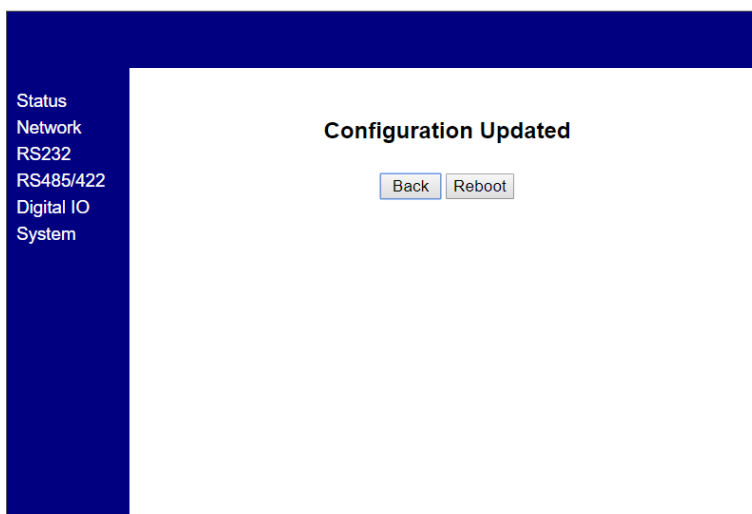


Please note: if the address is changed and **Save** is clicked (or by confirming with the ENTER key) then the network adapter can exclusively be opened and configured using this address.



» After having completed the parameter configuration, click **Save** to complete the Xesar network adapter configuration.

» To transfer the data to the Xesar Ethernet Adapter, press "Reboot".



» After rebooting the network adapter, disconnect the Xesar network adapter from the configuration PC.

» Then connect the Xesar network adapter to the Xesar LAN network.

Typically 150 different IP addresses can be defined for the Xesar network which means that you must define as many as 150 different IP addresses.

» Also check the network settings of the PC and observe the valid IP address range of your network.

- The Subnet mask defines the subnet used.
- The Remote Address /URL corresponds to the IP address of the computer on which the Xesar software is operated. It is responsible for the communication between the Xesar network adapter and the Xesar software.
It is important that the remote port (9081 by default) is the same as that specified in the Xesar Installation Manager (OCH Port).



The Remote IP (PC) and IP address (Xesar network adapter) are different!
They must reside on the same network.

Sample configuration:

IP address	192.168.1.100
Subnet mask	255.255.255.0
Device Name	Adapter1
Login password	passwordadapater1
Remote IP	192.168.1.11

2.6 Resetting a network adapter

If you have forgotten your set password or the Xesar network adapter does not work due to incorrect input data, you can reset the Xesar network adapter to the factory settings.

» Connect the mains adapter to the Xesar network adapter.

» Press the reset button for at least 5 seconds.

The password and settings are reset to the factory defaults.

» If you perform a reset of the Xesar network adapter in the event of an error, check the **parameter settings** again afterwards.



In this process, particularly check **Socket mode** (TCP client), **Baud rate** (115200) and **Port** (9081)!

RS485/422	
Socket Port	101 TCP Client ▾
Remote Address / URL	192.168.1.11
Remote Port	9081
Baud Rate	115200 ▾ bps

www.evva.com