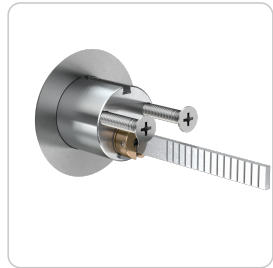


# Akura 44 | Rim cylinder 28 mm



## Technical information

Finish	NI – Nickel   MS – Brass   CP – Polished chrome   CPV – Chrome fully polished   CR – Chrome   ML – Brass lacquered   MP – Polished brass   MPV – Brass fully polished   NP – Polished Nickel   NPV – Nickel fully polished   PB – Patinated brown   PS – Patinated black
Optional security features	-
Optional technical installation feature	K900[...] – Security rim lock K900   K9000[...] – Security rim lock K9000   R050 – Escutcheon 50 mm   R060 – Escutcheon 60 mm   SPV – Twisted tail bar   TS[...] – Door thickness
Optional usage feature	R050 – Escutcheon 50 mm   R060 – Escutcheon 60 mm   SPV – Twisted tail bar   TS[...] – Door thickness   TXT – Customer-specific text   VAR – VARIO
Function	Can be locked with key   Reversible key
Usage	door exterior   apartment entrance
Security	Pin rows: 3   Active pins: 6   Passive pins: 10   Security card
Standards	-
Assembly	For EVVA rim locks   Rear fixing with screws   Hole pattern d > 28 mm
included components	Cylinder lock   Escutcheon   2 mounting screws M5x40
Product code	M.A44.AI.AZ28.AZ.[Finish].[Options]

## Dimensional drawing

