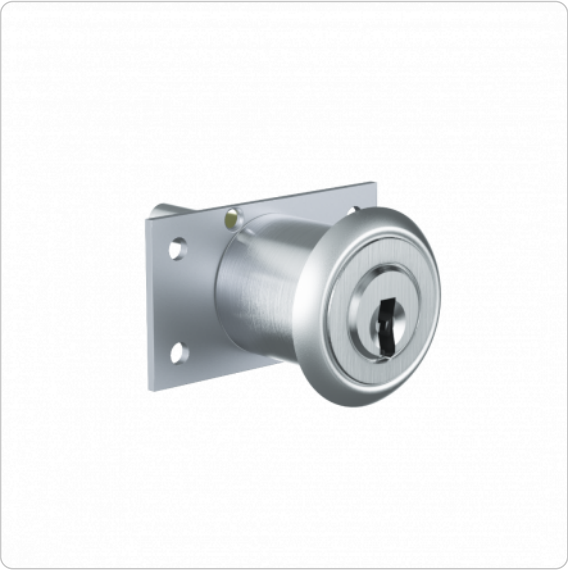


ICS pedestal lock | MR22Z



Product description

The ICS pedestal lock MR22Z-S is suitable for use in office furniture. Locking takes place by means of linkage via the integrated cam bar. The cylinder requires a hole pattern larger than 22 mm and is rear mounted using a fixing plate. Application examples are furniture roll containers and for central drawer locks.

Technical information

Cylinder length on the outside A in mm	25 30 35 40 45 50 60 70
Finish	NI – Nickel MS – Brass NP – Polished Nickel NPV – Nickel fully polished MP – Polished brass MPV – Brass fully polished ML – Brass lacquered CR – Chrome CP – Polished chrome CPV – Chrome fully polished PS – Patinated black PB – Patinated brown
Optional technical installation feature	BEFE – Fixing plate square BEFR – Fixing plate round
Accessories	Spray FinLube
Security features	Locking authorisation request on up to 5 tracks with spring-loaded locking elements Durable length profile Specially shaped locking pins as scanning protection and picking protection Hardened HSS steel pins in the cylinder plug as drilling protection
Technical installation situation	For pedestal locks carrier movement 180°, key movement 360°
Included components	Pedestal lock with rectangular fastening plate and escutcheon
Product code	M.ICS.MZ.MR22Z.[Outside cylinder length A in mm].[Finish].[Option]
Example	ICS pedestal lock 22 mm diameter, length 25 mm, nickel finish: M.ICS.MZ.MR22Z.25.NI

Dimensional drawing

