



Akura 44

A new dimension of flexibility





Akura 44. A new dimension of flexibility

Akura 44 is a flexible reversible key system with impressive versatility. During development, particular emphasis was placed on ensuring that the diverse security requirements imposed on an access system can be covered flexibly with a single locking system. For example, the security level can be adjusted within an installation. This is made possible by optional copy protection using magnet technology.



Benefits of Akura 44 at a glance

- › Optional key copying protection
 - › Wide cylinder range
 - › For well-structured master key systems
 - › Patent protection until 2037 at the latest*
-

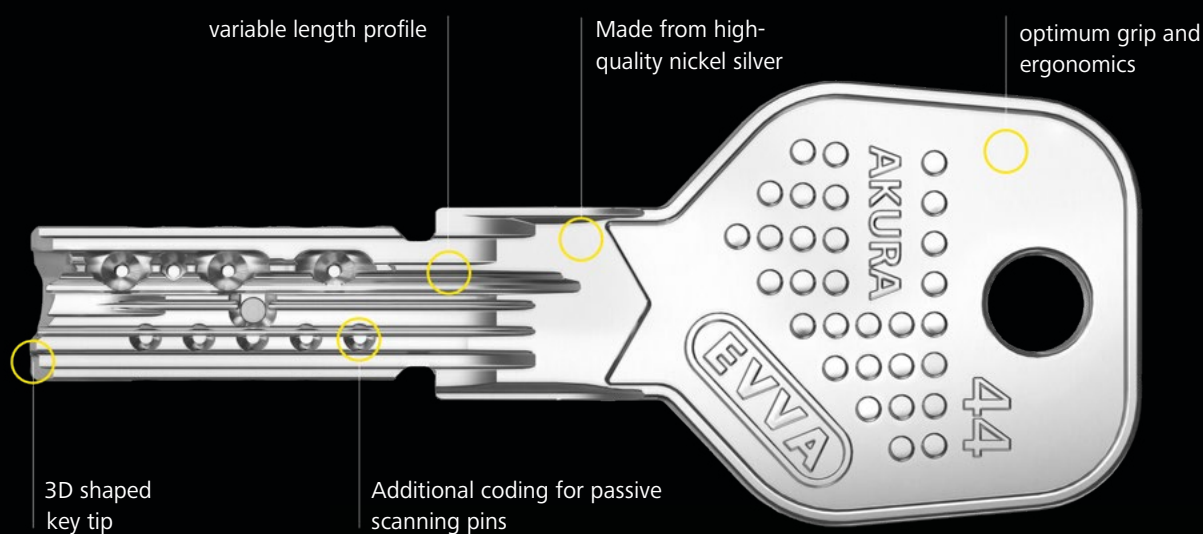
Akura 44. Always at home.

What features characterise a locking system? Security, flexibility, attractive pricing and protection of your investment. Akura 44 stands out in all these categories. Over 100 years of EVVA's mechanical expertise went into the development of Akura 44.



A new dimension of flexibility

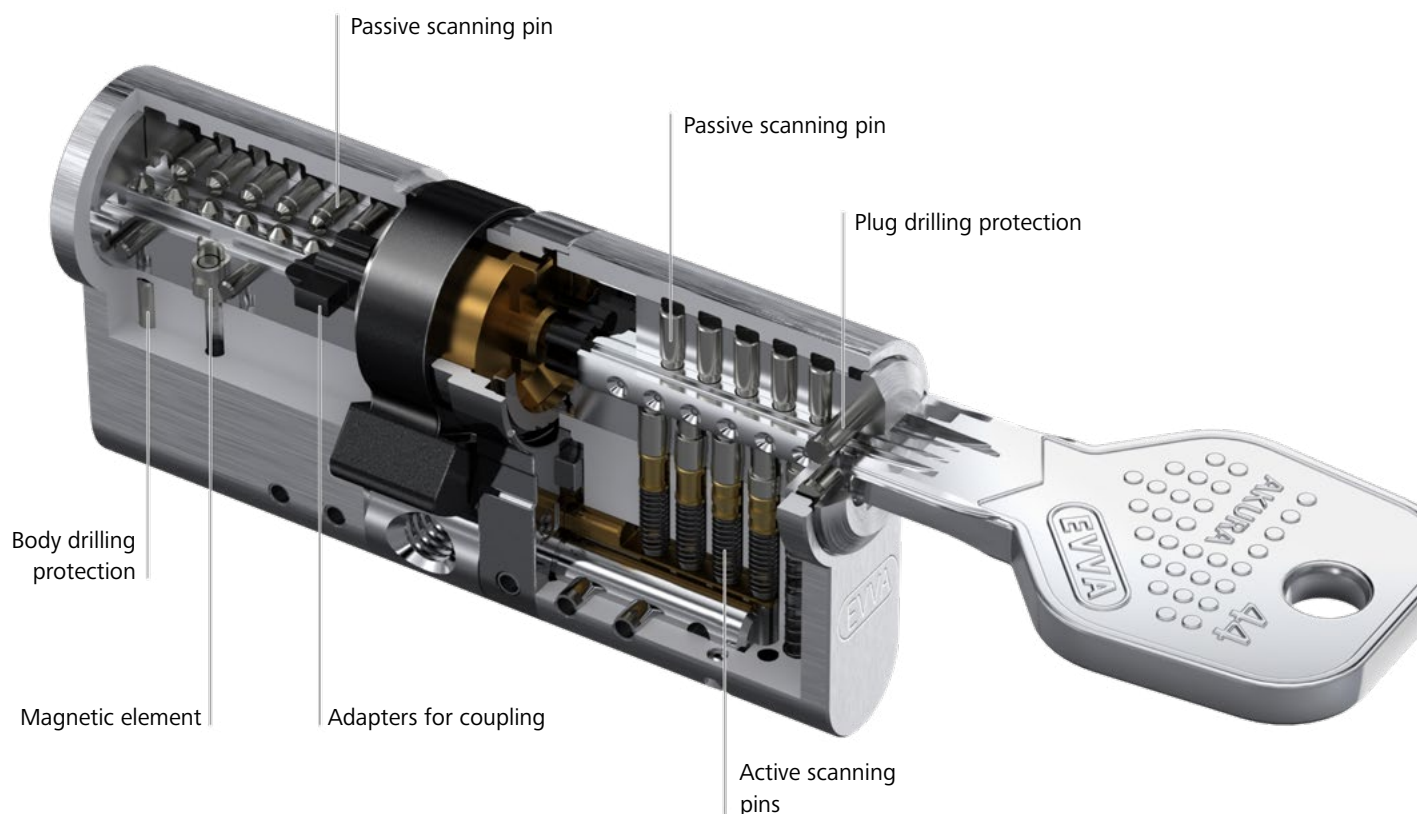
The authorisation check on Akura 44 cylinders occurs in several levels simultaneously, namely through the combination of a variable length profile, 6 active and up to 10 passive scanning pins, which also extend the calculation capacities. Optional magnetic copying protection secures sensitive areas if required and makes it difficult to copy the key and manipulate the cylinder.



Practical, handy and appealing

Akura 44 keys are also available in a range of colours. The colour coding helps to easily distinguish between keys.





All-round protection

Copy keys, additional cylinders and lock charts are available from authorised EVVA Partners only upon providing proof of legitimacy, i.e. the EVVA security card.



Security features

The Akura 44 cylinder offers drilling, pulling, picking and scanning protection and thus protects against illegal opening methods.



Akura 44. One for all

The wide range of cylinders has made this possible: One for All! With just one key you can lock doors, garage key switches, padlocks, lifts and many other objects. In residential or commercial buildings, administrators benefit from reduced costs and persons benefit from a small and lightweight key ring.

Your cylinder
for every door
situation



27/35

Short cylinder

Akura 44 also has a short cylinder with a minimum length of 27 mm for the outside of the door. As the cylinder barely protrudes, it does not require robust escutcheons. The Akura 44 short cylinder also contains 6 sliders for reliable EVVA security.





Versatile application: Cam lock

Cam locks are versatile in residential buildings and can be easily integrated into the master key system, whether for the letter box, lockable noticeboard or distribution cabinet.



Reliable security: Padlock

Akura 44 also offers padlocks with hardened steel pins in the cylinder plug as drilling protection. They reliably secure the cellar.



Additional security: Rim cylinder

Additional security devices on apartment doors make it even harder for thieves to break in. Outside and rim cylinders are therefore also available in the Akura 44 cylinder range.

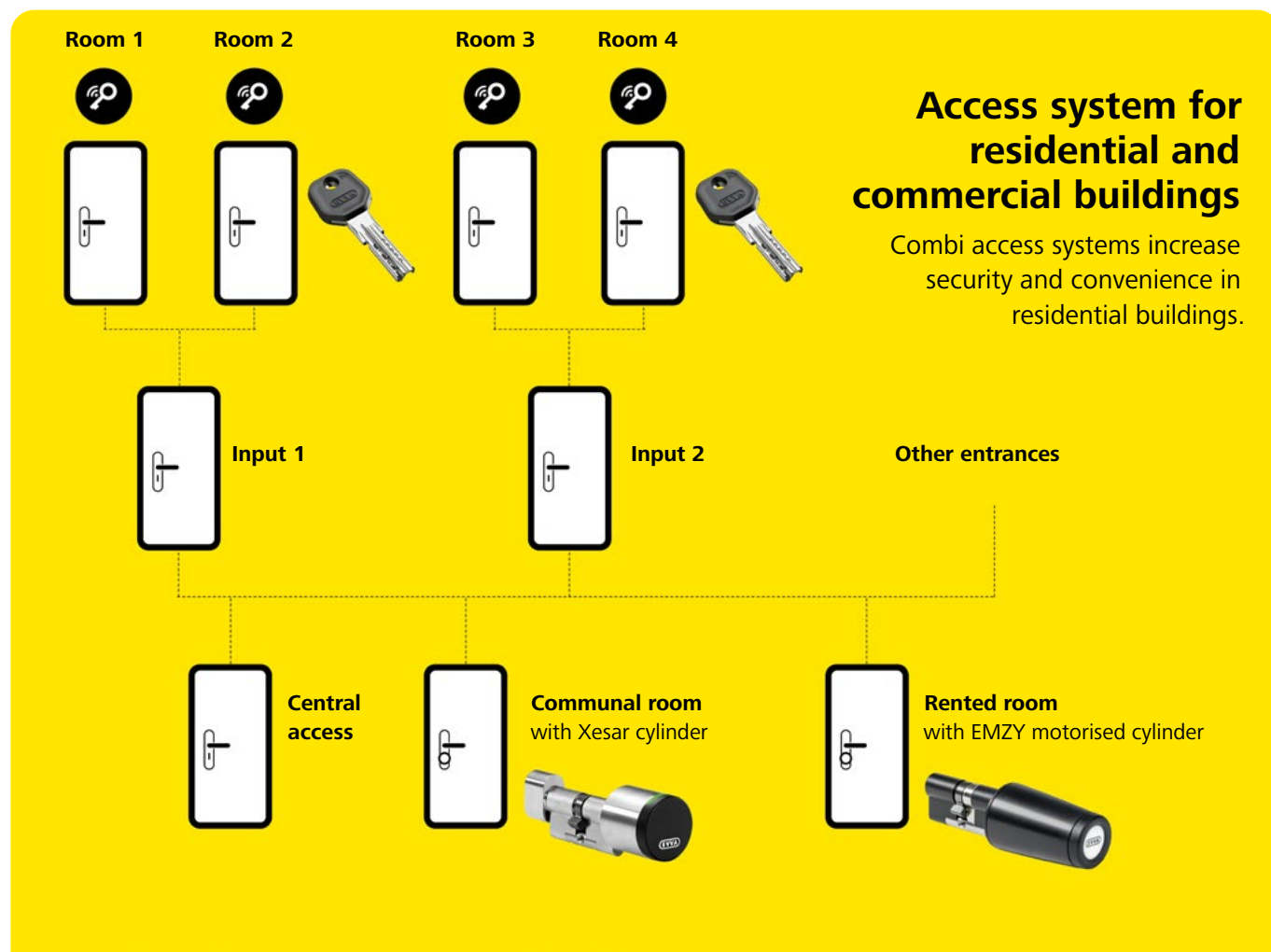


Smart living: Half cylinder

Electrically operated equipment, such as shades or roller shutters for ground floor premises, is moved with a turn of the key switch.

Akura 44. Combined with electronic access systems

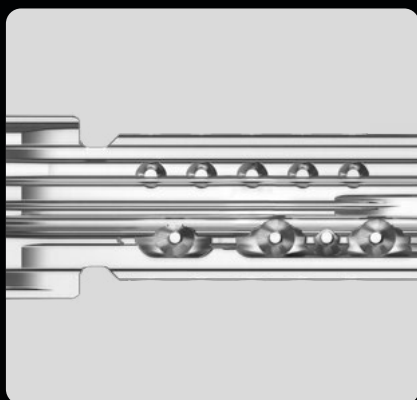
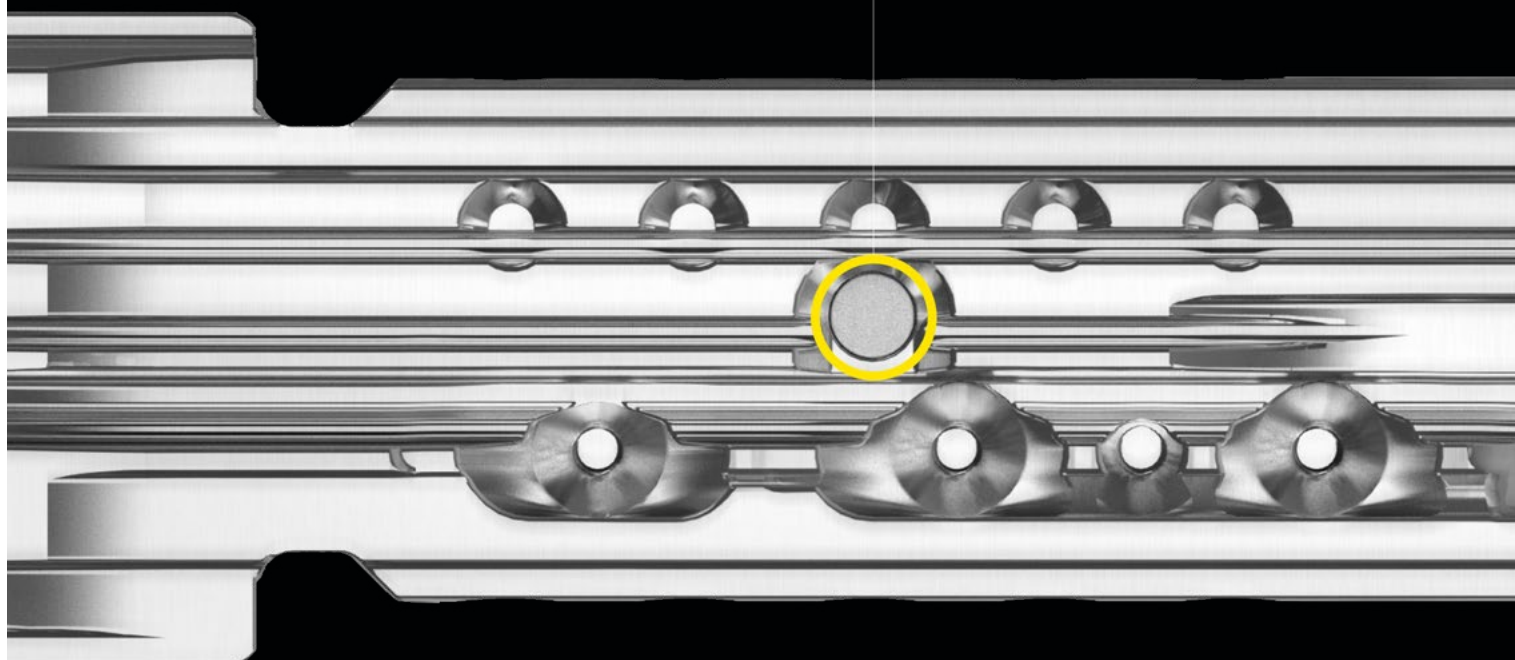
Akura 44 can be perfectly combined with EVVA electronic access systems. Electronics are preferred wherever logging and time-limited access are important. Electronic and mechanical access components can be locked with just one key: the combi key.



Akura 44. Additional security upon request

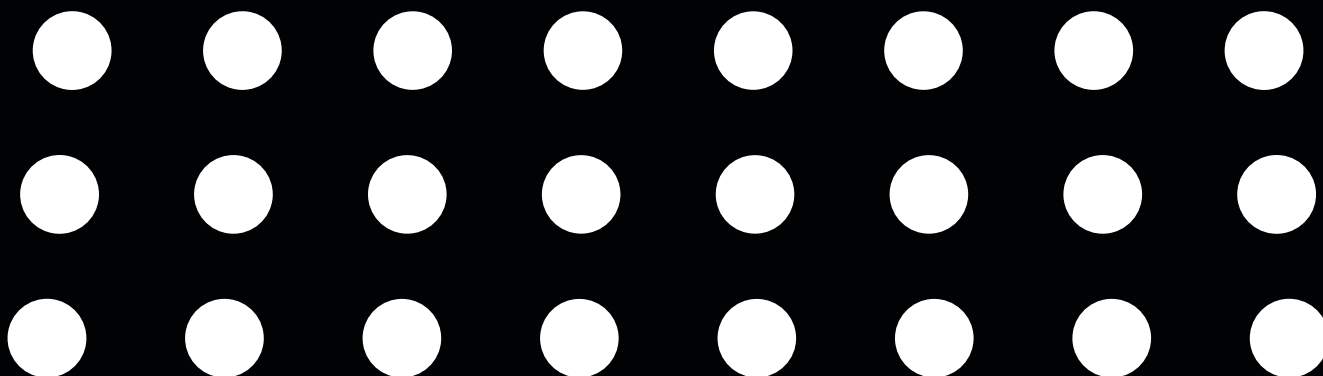
Wouldn't it be extremely practical and cost-effective if you could vary the level of security within a facility? Not every door needs maximum security. This is possible with the optional magnetic pill on the Akura 44 key. It makes the key secure against 3D printing and the cylinder more break-in resistant.

With magnetic pill
Fully secure 3D printing



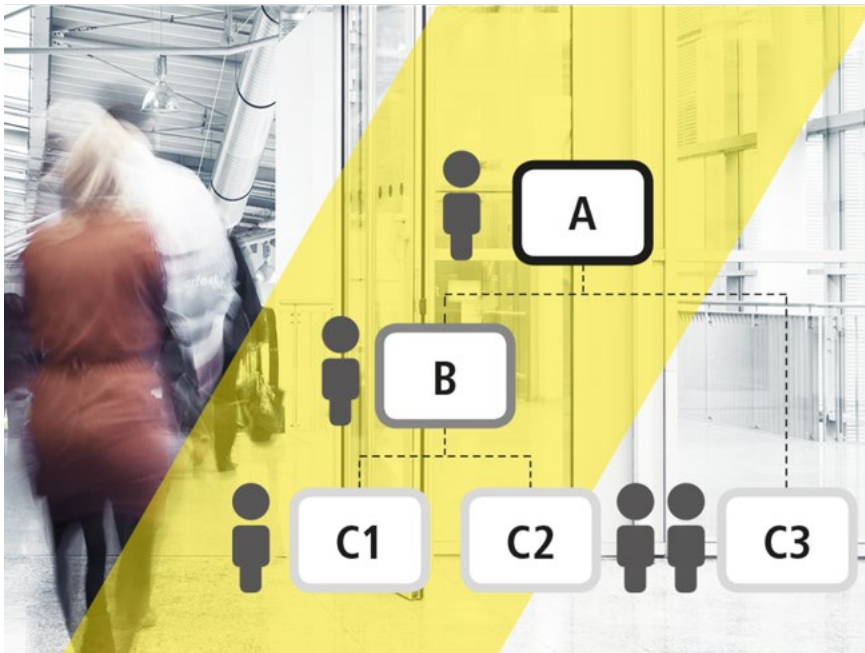
Akura 44 with and without magnet technology

Magnetic security is recommended for exterior doors requiring more protection. For the majority of inside doors, Akura 44 can be used without magnetic pills and scanning.



Unique EVVA service

Since 1919, EVVA services have been geared towards customer benefits. This has resulted in market-based products, the best product and consulting service for customers and partner as well as access system expertise that boosts customer convenience and gives operators a competitive, economic edge.



Access systems from professionals

Access systems define who has access to which facilities. EVVA not only offers comprehensive expertise in planning access systems, but the company's range also includes high-performance access systems that are able to accommodate any level of complex authorisation structures.



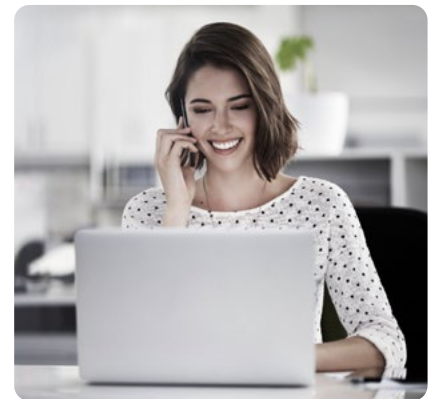
Your EVVA Partner portal

Our Partner portal provides everything you as EVVA Partner need as part of your everyday activities: Price lists, catalogues, data sheets, and the option to sign up for training sessions.



Mechanical and electronic access systems

Apart from EVVA, only a few manufacturers develop and produce their own mechanical and electronic systems in Vienna. EVVA customises these systems to create access solutions for use anywhere in the world



Excellent advice

EVVA is your reliable partner. Be it for technical queries concerning EVVA products or planning issues regarding a project, you can always count on EVVA.

Innovation made in Austria.

Trust a family-owned business that has been researching, developing and producing for 100 years and operates in a respectful and cooperative way. EVVA – the European leader in mechanical and electronic access systems!

www.evva.com