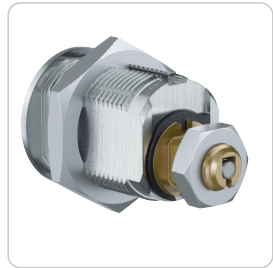


ICS cam lock | MB22K



Product description

The ICS cam lock MB22K locks the lock bar of boxes and display cabinets with a rear 8 mm square spindle. It fits a hole pattern larger than 22 mm, is flattened on the side and is secured in the lock by a flat nut. Examples of applications are lockers and metal cabinets.

Technical information

Cylinder length on the outside A in mm	27 32 37
Finish	NI – Nickel MS – Brass NP – Polished Nickel MP – Polished brass ML – Brass lacquered CR – Chrome CP – Polished chrome PS – Patinated black PB – Patinated brown
Optional technical installation feature	SR22 – Dust and weather protection cover ST[...] – Locking direction A-H
Optional usage feature	B01 – 2 key extracting positions 0°, 90° B03 – 2 key extracting positions 0°, -90°
Accessories	Spray FinLube
Security features	Locking authorisation request on up to 5 tracks with spring-loaded locking elements Durable length profile Specially shaped locking pins as scanning protection and picking protection Hardened HSS steel pins in the cylinder plug as drilling protection
Technical installation situation	Hole pattern larger than 22 mm flattened on the side rear mounted with a flat nut for use in key boxes, mailboxes and other sheet metal cabinets
Included components	Cylinder lock with fastening nuts for cylinder and cam; also without cam
Product code	M.ICS.HB.MB22K.[Outside cylinder length A in mm].[Finish].[Option]
Example	ICS cam lock 22 mm diameter, nickel finish, length 27 mm, 2 key extracting positions at the bottom and left: M.ICS.HB.MB22K.27.NI.B01

Dimensional drawing

