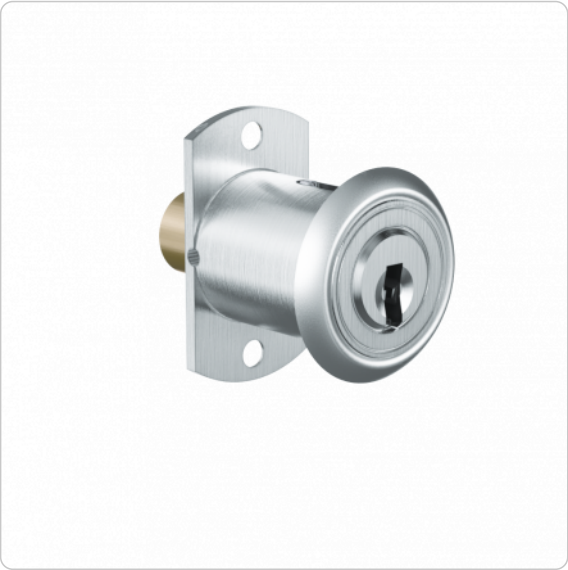


ICS push cylinder | DRZ22



Product description

The ICS push cylinder DRZ22 is suitable for use in metal and wooden sliding doors. The door is locked by pressing the cylinder. The cylinder requires a hole pattern larger than 22 mm and is rear mounted with a screw-on plate. Application examples are office furniture with sliding doors.

Technical information

Cylinder length on the outside A in mm	28
Finish	NI – Nickel MS – Brass NP – Polished Nickel NPV – Nickel fully polished MP – Polished brass MPV – Brass fully polished ML – Brass lacquered CR – Chrome CP – Polished chrome CPV – Chrome fully polished PS – Patinated black PB – Patinated brown
Optional technical installation feature	KV05 – Plug end elongation 5 mm
Accessories	Spray FinLube
Security features	Locking authorisation request on up to 5 tracks with spring-loaded locking elements Durable length profile Specially shaped locking pins as scanning protection and picking protection Hardened HSS steel pins in the cylinder plug as drilling protection
Technical installation situation	For installation in furniture sliding doors
Included components	Push cylinder without fastening material incl. escutcheon
Product code	M.ICS.MZ.DRZ22.[Outside cylinder length A in mm].[Finish].[Option]
Example	ICS push cylinder, 22 mm, nickel finish, plug end extended: M.ICS.MZ.DRZ22.28.NI.KV05

Dimensional drawing

