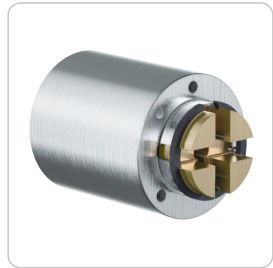


ICS switching cylinder | MR22A



Product description

The ICS Switching cylinder MR22A is suitable for use in various key switches. It does not have a cam bar on the rear, fits a hole pattern larger than 22 mm and is rear mounted with 2 screws. Examples of applications are alarm systems, escalators and control units.

Technical information

Cylinder length on the outside A in mm	25 35
Finish	NI – Nickel MS – Brass NP – Polished Nickel NPV – Nickel fully polished MP – Polished brass MPV – Brass fully polished ML – Brass lacquered CR – Chrome CP – Polished chrome CPV – Chrome fully polished PS – Patinated black PB – Patinated brown
Optional usage feature	D04 – 4 key extracting positions 0°, 90°, 180°, 270°
Accessories	Spray FinLube
Security features	Locking authorisation request on up to 5 tracks with spring-loaded locking elements Durable length profile Specially shaped locking pins as scanning protection and picking protection Hardened HSS steel pins in the cylinder plug as drilling protection
Technical installation situation	When selecting the switching cylinder, it must be ensured that the switch angle of the cylinder matches that of the switch
Included components	Switching cylinder with tail bar as specified
Product code	M.ICS.SZ.MR22A.[Outside cylinder length A in mm].[Finish].[Option]
Example	ICS switching cylinder MR22A, length 25 mm, nickel finish, key removal top and bottom: M.ICS.SZ.MR22A.25.NI.B02

Dimensional drawing

