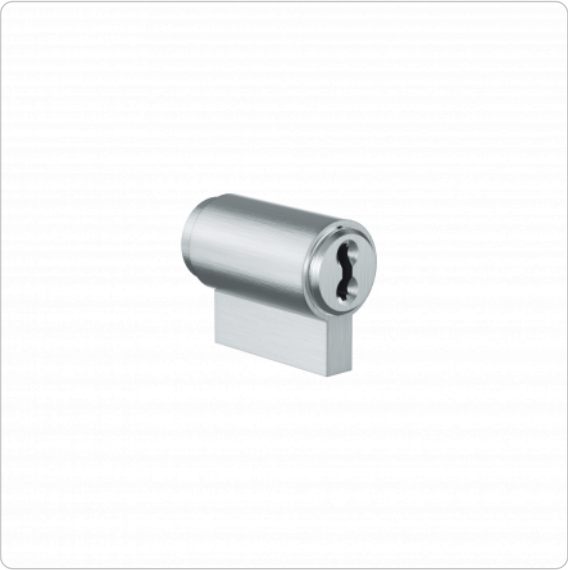


# 4KS Insert cylinder | Profile cylinder insert

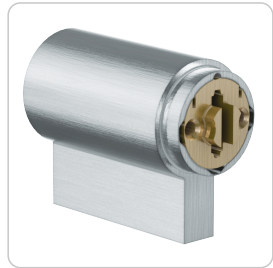


## Product description

The 4KS insert cylinder PZE.EK is suitable for use in conventional CISA® electric locks. It is equipped with a cam bar mounted on the rear side and holes in the plug. Suitable for a hole pattern with a diameter of 17 mm and a 6 mm wide bar recess in the electric lock. Fastening takes place in the lock case.

## Technical information

Finish	NI – Nickel   MP – Polished brass   NP – Polished Nickel   MS – Brass   ML – Brass lacquered   CR – Chrome   CP – Polished chrome   PS – Patinated black   PB – Patinated brown
Optional usage feature	TXT – Customer-specific text
Accessories	Spray FinLube
Security features	Locking authorisation request in at least 18 scanning positions (authorisation positions)   12 springless, linear-controlled locking elements   Security elements made of tungsten carbide or hardened steel to prevent drilling and pulling
Technical installation situation	Insert cylinder for the inner side of the "Elektrika" garden door strike
Included components	Insert cylinder without fixing material
Product code	M.4KS.EZ.PZE.EK.[Finish]
Example	4KS Insert cylinder for the inner side of the garden door strike "Elektrika", nickel plated finish, with Vario re-coding function: M.4KS.EZ.PZE.EK.NI



## Dimensional drawing

