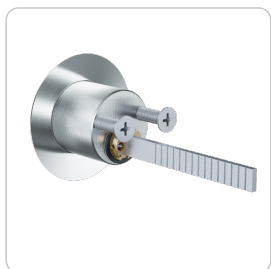


4KS Outside and inside cylinder | Rim cylinder 28 mm



Product description

The 4KS rim cylinder AZ28.AZ is suited for use on the outside of the door. Surface mounted lock equipped with a vertical tail bar, fits a hole pattern larger than 28 mm and is rear mounted with throughhole screws. Application examples are EVVA rim locks from the K900 series and various surface mounted locks.

Technical information

Finish	NI – Nickel MP – Polished brass NP – Polished Nickel MS – Brass ML – Brass lacquered CR – Chrome CP – Polished chrome PS – Patinated black PB – Patinated brown
Optional technical installation feature	K900[...] – Security rim lock K900 K9000[...] – Security rim lock K9000 R060 – Escutcheon 60 mm SPV – Twisted tail bar
Door leaf thickness options	TS66 – Door thickness 57 up to 66 mm TS76 – Door thickness 67 up to 76 mm TS86 – Door thickness 77 up to 86 mm
Optional usage feature	TXT – Customer-specific text
Accessories	Spray FinLube
Security features	Locking authorisation request in at least 18 scanning positions (authorisation positions) 12 springless, linear-controlled locking elements Security elements made of tungsten carbide or hardened steel to prevent drilling and pulling
Technical installation situation	For use with EVVA rim locks from the K900/9000 series up to door leaf thickness 56 mm
Included components	Cylinder lock with escutcheon and 2 M5×40 fixing screws
Product code	M.4KS.AI.AZ28.AZ.[Finish].[Option]
Example	4KS rim cylinder AZ, nickel plated finish with escutcheon 60 mm diameter: M.4KS.AI.AZ28.AZG.NI.R060

Dimensional drawing

