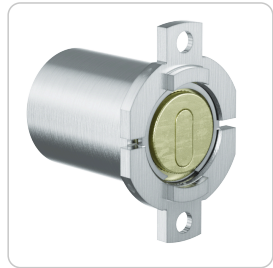


# ICS sufrace mounted lock | MR26F



### Product description

The ICS surface mounted locks MR26F is suitable for use in doors. It is equipped with vertical cams for mortise locks and fits a hole pattern larger than 26 mm. Fastened with screw-on tabs. Suitable for installation in Fichet® locks.

### Technical information

Cylinder length on the outside A in mm	33   51   60   80
Finish	NI – Nickel   MS – Brass   NP – Polished Nickel   NPV – Nickel fully polished   MP – Polished brass   MPV – Brass fully polished   ML – Brass lacquered   CR – Chrome   CP – Polished chrome   CPV – Chrome fully polished   PS – Patinated black   PB – Patinated brown
Optional usage feature	VAR – VARIO
Accessories	Spray FinLube
Security features	Locking authorisation request on 5 tracks   13 spring-loaded locking elements   Durable length profile   Specially shaped locking pins as scanning protection and picking protection   Hardened HSS steel pins in the cylinder plug as drilling protection
Technical installation situation	Suitable for installation in Fichet® locks
Included components	Cylinder lock
Product code	M.ICS.AI.MR26F.[Outside cylinder length A in mm].[Finish].[Option]
Example	ICS surface mounted cylinder, 26 mm diameter, 33 mm long, nickel finish: M.ICS.AI.MR26F.33.NI

### Dimensional drawing

