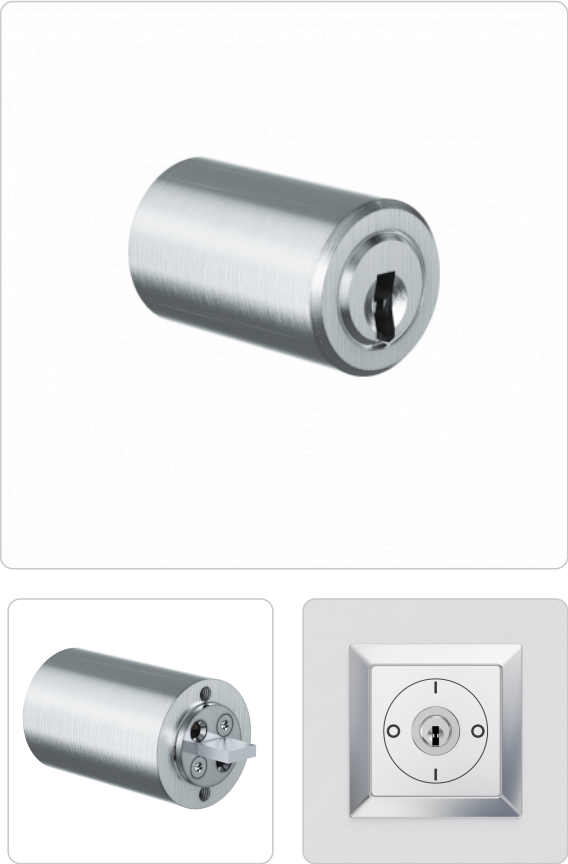


ICS switching cylinder | MR22AF



Product description

The ICS Switching cylinder MR22AF is suitable for use in various key switches. It is equipped with configurable tail bar on the back. It fits a hole pattern larger than 22 mm and is fastened by 2 rear screws. Examples of applications are alarm systems, escalators and control units.

Technical information

Cylinder length on the outside A in mm	35
Finish	NI – Nickel MS – Brass NP – Polished Nickel NPV – Nickel fully polished MP – Polished brass MPV – Brass fully polished ML – Brass lacquered CR – Chrome CP – Polished chrome CPV – Chrome fully polished PS – Patinated black PB – Patinated brown
Optional technical installation feature	BEFE – Fixing plate square BEFR – Fixing plate round SP[...] – Special tail bar
Optional usage feature	D04 – 4 key extracting positions 0°, 90°, 180°, 270°
Accessories	Spray FinLube
Security features	Locking authorisation request on up to 5 tracks with spring-loaded locking elements Durable length profile Specially shaped locking pins as scanning protection and picking protection Hardened HSS steel pins in the cylinder plug as drilling protection
Technical installation situation	When selecting the switching cylinder, it must be ensured that the switch angle of the cylinder matches that of the switch
Included components	Switching cylinder with tail bar as specified
Product code	M.ICS.SZ.MR22AF.[Outside cylinder length A in mm].[Finish].[Option]
Example	ICS switching cylinder MR22AF, length 35 mm, nickel finish, key removal top and bottom: M.ICS.SZ.MR22AF.35.NI.B02

Dimensional drawing

