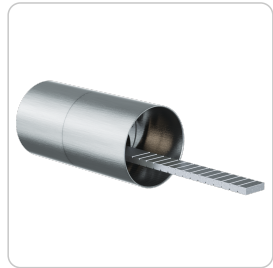


EPS Outside and inside cylinder | Rim cylinder 25 mm



Product description

The EPS rim cylinder AZ25.FP is suitable for use in garden doors. Surface mounted lock equipped with a tail bar, fits a hole pattern larger than 25 mm and is rear mounted with throughhole screws. Potential applications are garden gates with CISA® locks.

Technical information

System	EPS5 – Extended Profile System 5 pin EPS5M – Extended Profile System Trademark protection 5 pin EPS6 – Extended Profile System 6 pin EPS6M – Extended Profile System Trademark protection 6 pin
Finish	NI – Nickel MS – Brass NP – Polished Nickel NPV – Nickel fully polished MP – Polished brass MPV – Brass fully polished ML – Brass lacquered CR – Chrome CP – Polished chrome CPV – Chrome fully polished PS – Patinated black PB – Patinated brown
Optional usage feature	TXT – Customer-specific text VAR – VARIO
Accessories	Spray FinLube
Cylinder length on the outside A in mm	EPS5: 23 EPS5M: 23 EPS6: 28 EPS6M: 28
Security features	Pin tumbler system with 5 or 6 active, spring-loaded locking elements Features in cylinder as protection against covert opening methods Up to 20 additional side codes with integrated tampering control Hardened steel elements as drilling protection
Technical installation situation	For use on the outside, rear mounted with screws
Included components	Cylinder lock without screws, with tail bar and sleeve
Product code	M.[System].AI.AZ25.FP.[Finish].[Option]
Example	EPS 5-pin rim cylinder, diameter 25 mm, nickel finish, with VARIO re-coding function option: M.EPS5.AI.AZ25.FP.NI.VAR

Dimensional drawing

