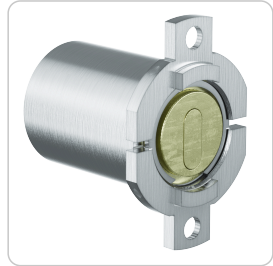


# 4KS Outside and inside cylinder | Round cylinder 26 mm Fichet®



**Product description**

The 4KS surface mounted locks MR26F is suitable for use in doors. It is equipped with vertical cams for mortise locks and fits a hole pattern larger than 26 mm. Fastened with screw-on tabs. Suitable for installation in Fichet® locks.

**Technical information**

Cylinder length on the outside A in mm	33   51   60   80
Finish	NI – Nickel   MP – Polished brass   NPV – Nickel fully polished   MS – Brass   NP – Polished Nickel   MPV – Brass fully polished   ML – Brass lacquered   CR – Chrome   CP – Polished chrome   CPV – Chrome fully polished   PS – Patinated black   PB – Patinated brown
Optional usage feature	TXT – Customer-specific text
Accessories	Spray FinLube
Security features	Locking authorisation request in at least 18 scanning positions (authorisation positions)   12 springless, linear-controlled locking elements   Security elements made of tungsten carbide or hardened steel to prevent drilling and pulling
Technical installation situation	Suitable for installation in Fichet® locks
Included components	Cylinder lock
Product code	M.4KS.AI.MR26F.[Outside cylinder length A in mm].[Finish]
Example	4KS surface mounted cylinder Fichet, length 33 mm, nickel plated finish: M.4KS.AI.MR26F.33.NI

**Dimensional drawing**

