



# EPS

Best of Stiftsysteme





## EPS. Best pin systems

EPS reliably protects private houses and is also very popular in well-structured master key systems in office buildings, catering facilities or residential developments. EPS is the successful result of the continuous further development of tried and tested EVVA pin systems. High levels of user convenience and the system's durability make it the best pin system.



---

### The benefits of EPS at a glance

- › One key fits all
  - › For well-structured master key systems
  - › Quick assembly thanks to modular design
  - › Patent protection until 2041 at the latest\*
- 

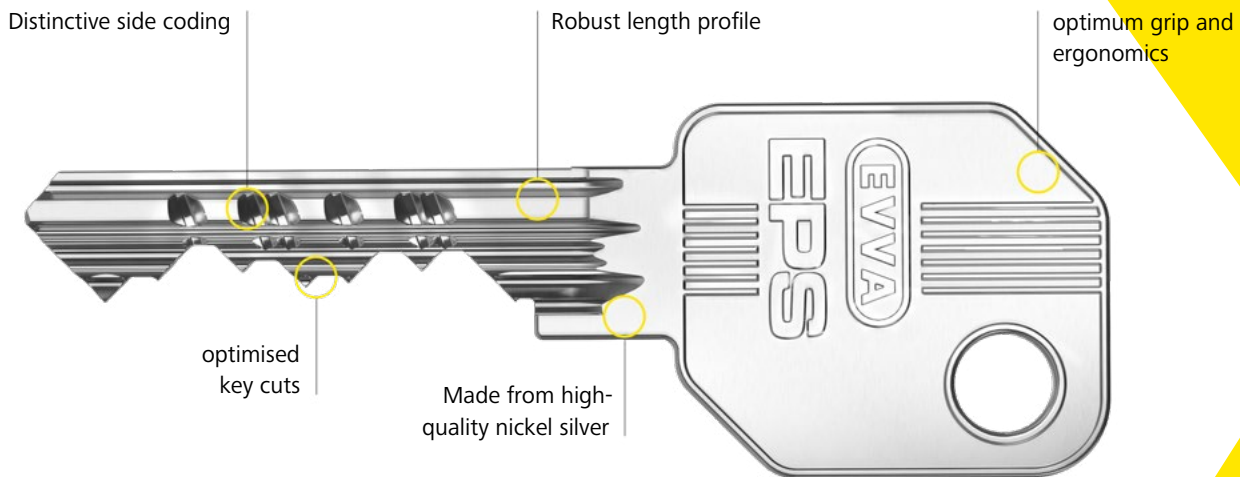
### The access system for well-structured master key systems

EPS is ideal for well-structured master key systems and a clearly defined user group. This includes on doors within residential complexes or office buildings. In cooperation with qualified partners, EVVA has been providing security technology for a hundred years.



# Best pin systems

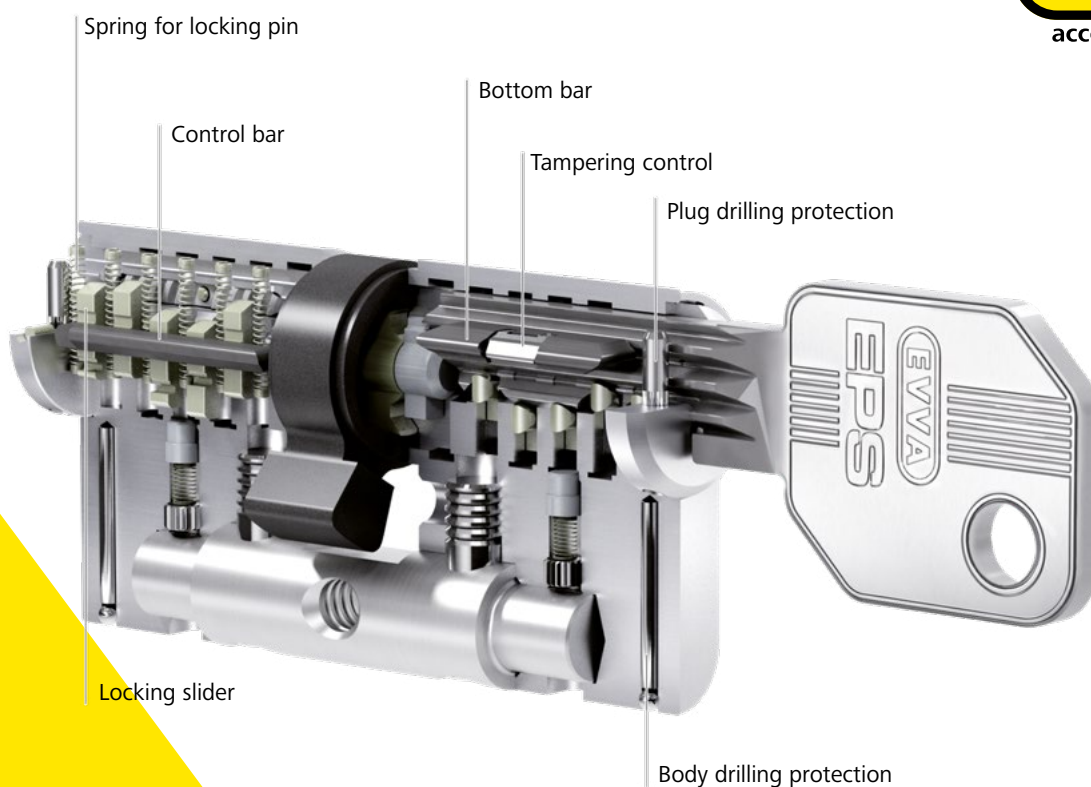
EPS is a pin tumbler system with 5 or 6 active spring-loaded scanning elements; it offers up to 20 additional side coding variations. The keys' integrated manipulation control within the cylinder and the double-action locking pins guarantee excellent security. The EPS key is a strong nickel silver key with a large key cross-section. EPS cylinders are available in a compact and modular design.



## Practical, handy and appealing

EPS keys are available in a range of colours. The colour coding helps to easily distinguish between keys.





## All-round protection

Copy keys, additional cylinders and lock charts are available from authorised EVVA Partners only upon providing proof of legitimacy, i.e. the EVVA security card.



## Benefit from the security features

The reliable technology of the EPS cylinder offers lasting protection against illegal opening methods.



# EPS. Cylinders for every door requirement

EPS cylinder locks can handle all access situations that can be planned with a master key system due to their properties and numerous variants and options. In this way, access to rooms and floors, access to cabinets and display cases, or the activation of barriers or other electronic installations can be clearly structured. This means even greater comfort and security.



## Double cylinder

are suitable for interior and exterior doors and can be equipped with numerous versions and options.



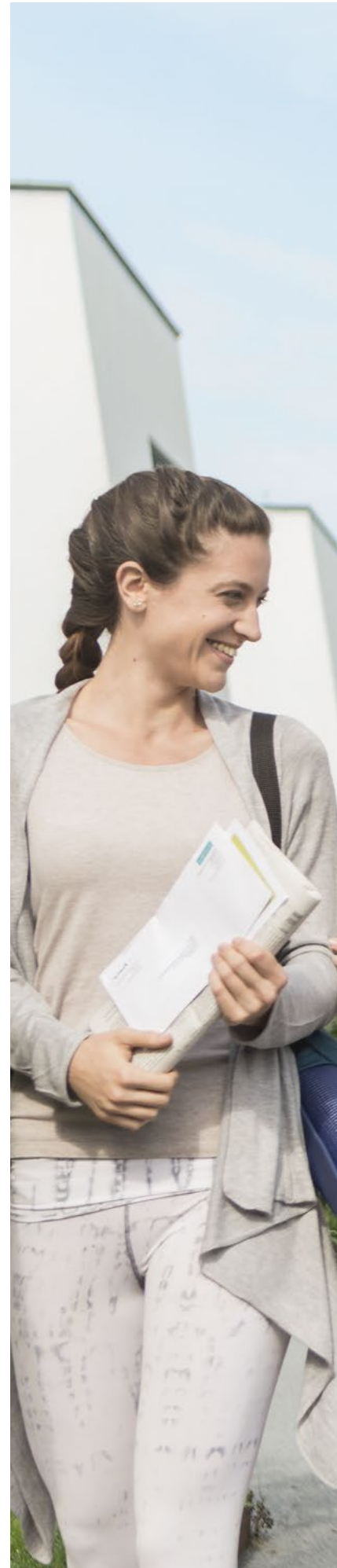
## Thumbturn cylinder

allows convenient opening and closing without keys.



## Furniture cylinders

make sure that important documents are securely archived.





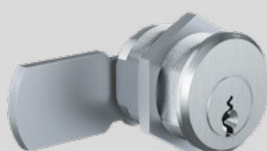
### **Half cylinder**

suitable for barriers, key switches, lifts and numerous other situations.



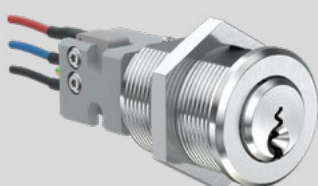
### **Switch cylinder**

operate control elements such as those in lift systems.



### **Cam locks**

for mailbox systems and for secure storage in showcases and display cabinets.

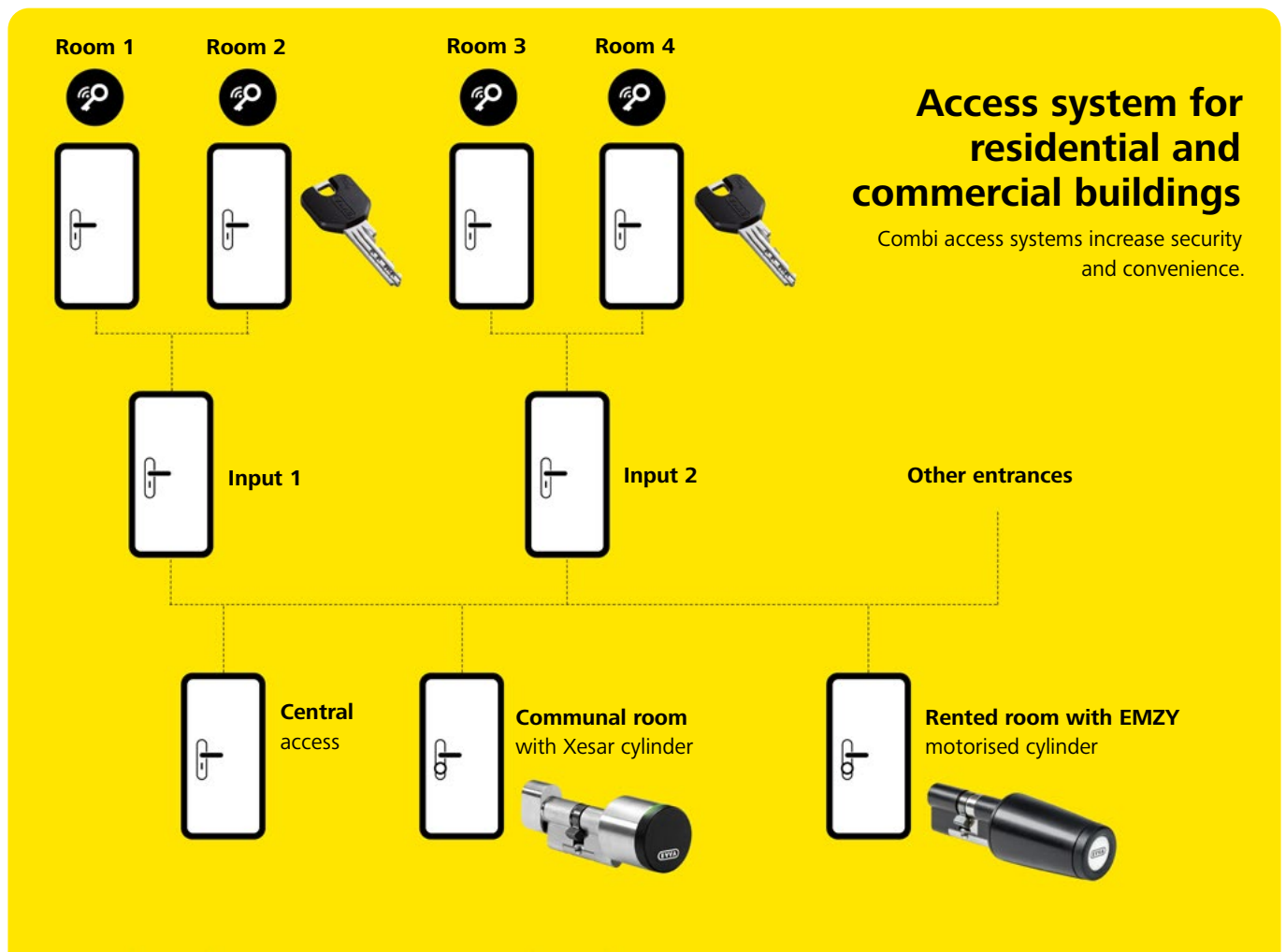


### **Switch cylinders**

control electronic systems, such as automatic sliding doors.

# EPS. Combined with electronic access systems

EPS can be perfectly combined with EVVA electronic locking systems in a residential complex. Electronic access systems are primarily used on the perimeters of a facility and where event logs and time-limited access are important. Electronic and mechanical access components can be locked with just one key: the combi key.





## EPS. The choice is yours

Compact or modular cylinder? Would you like both? No problem with EPS. You can plan both compact and modular cylinders in the same master key system. On demand!



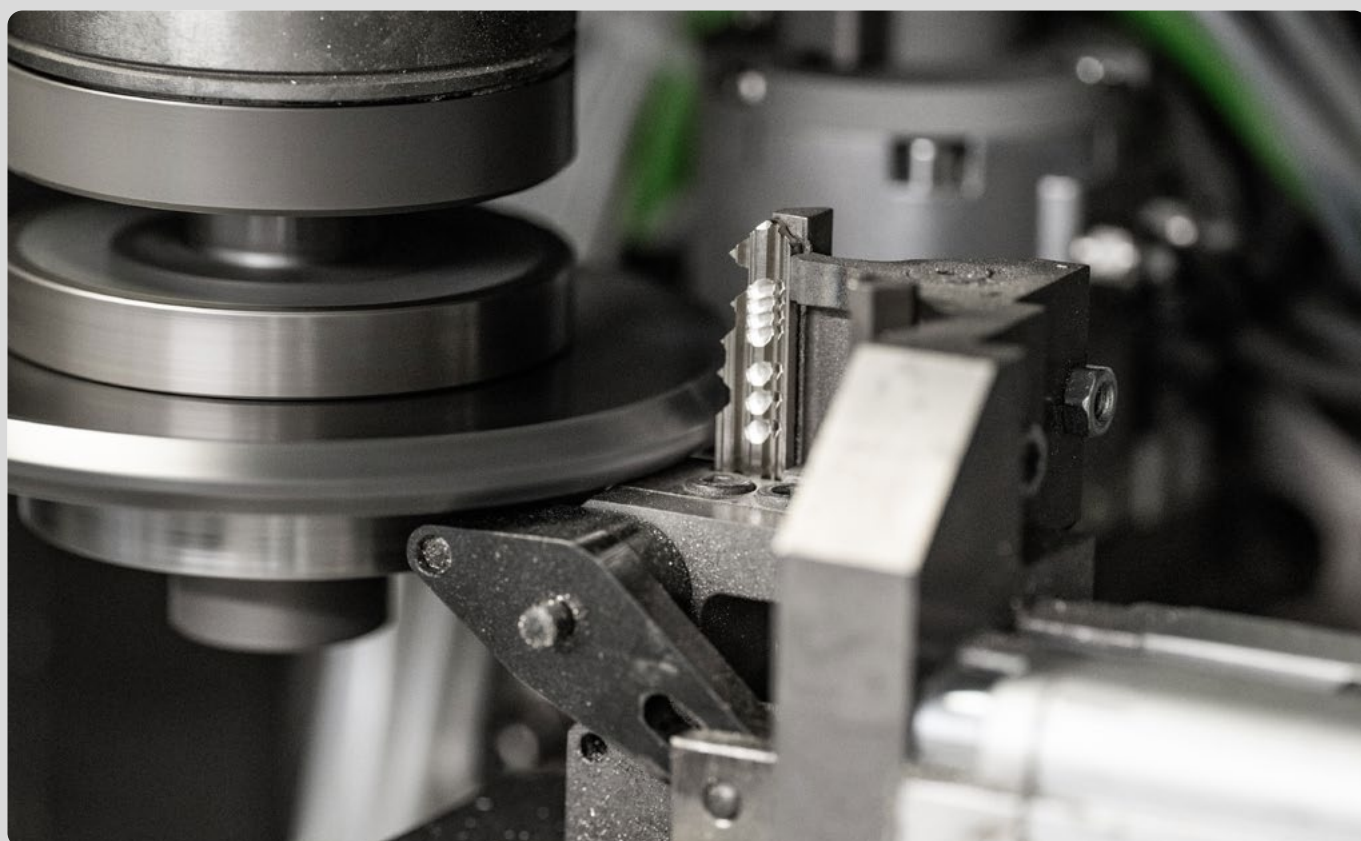
Modular system (SY-MO)



Compact design (COMP)

### Pin system in high-end fitting

EPS is the successful result of the continuous development of tried and tested EVVA pin systems. High levels of user convenience and the system's durability make it the best pin system.



# Unique EVVA service

Since 1919, EVVA services have been geared towards customer benefits. This has resulted in market-based products, the best product and consulting service for customers and partner as well as access system expertise that boosts customer convenience and gives operators a competitive, economic edge.



## Access systems from professionals

Access systems define who has access to which facilities. EVVA not only offers comprehensive expertise in planning access systems, but the company's range also includes high-performance access systems that are able to accommodate any level of complex authorisation structures.



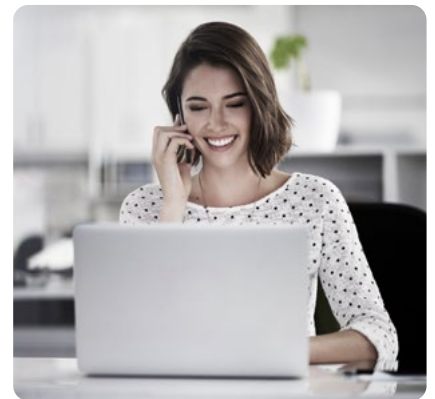
## Your EVVA Partner portal

Our Partner portal provides everything you as EVVA Partner need as part of your everyday activities: Price lists, catalogues, data sheets, and the option to sign up for training sessions.



## Mechanical and electronic access systems

Apart from EVVA, only a few manufacturers develop and produce their own mechanical and electronic systems in Vienna. EVVA customises these systems to create access solutions for use anywhere in the world



## Excellent advice

EVVA is your reliable partner. Be it for technical queries concerning EVVA products or planning issues regarding a project, you can always count on EVVA.

Innovation made in Austria.

Trust a family-owned business that has been researching, developing and producing for 100 years and operates in a respectful and cooperative way. EVVA – the European leader in mechanical and electronic access systems!

**[www.evva.com](http://www.evva.com)**