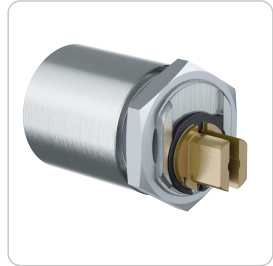


4KS Cam lock | Coin operated lock cylinder



Product description

The 4KS cam lock DPM25 locks coin deposit locks with a flattened plug end on the side. It fits a hole pattern larger than 25 mm, is flattened on the side and is secured in the lock by a flat nut. Application examples are coin operated locks.

Technical information

Cylinder length on the outside A in mm	37
Finish	NI – Nickel MP – Polished brass NP – Polished Nickel MS – Brass ML – Brass lacquered CR – Chrome CP – Polished chrome PS – Patinated black PB – Patinated brown
Optional technical installation feature	DPM[...] – Coin operated lock Depomat® LI – Left RE – Right
Optional usage feature	TXT – Customer-specific text
Accessories	Spray FinLube
Security features	Locking authorisation request in at least 18 scanning positions (authorisation positions) 12 springless, linear-controlled locking elements Security elements made of tungsten carbide or hardened steel to prevent drilling and pulling
Technical installation situation	Hole pattern larger than 25 mm in combination with a Depomat coin operated lock
Included components	Coin operated lock cylinder
Product code	M.4KS.HB.DPM25.[Outside cylinder length A in mm].[Finish].[Option]
Example	4KS Coin operated lock cylinder diameter 25 mm, length 37 mm, nickel plated finish with coin operated lock (deposit € 1.-) right version: M.4KS.HB.DPM25.37.NI.DPMRE1E

Dimensional drawing

