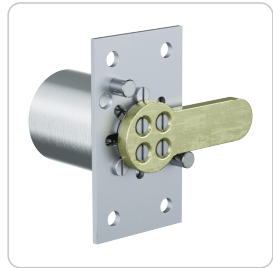


ICS cam lock | MR22R



Product description

The ICS cam lock MR22R locks boxes and cabinets with a cam at the rear. It fits a hole pattern larger than 22 mm and is fastened on the inside by a fixing plate. Application examples are display cabinets and wooden furniture.

Technical information

Cylinder length on the outside A in mm	25 30 35 40 45 50 60 70
Finish	NI – Nickel MS – Brass NP – Polished Nickel NPV – Nickel fully polished MP – Polished brass MPV – Brass fully polished ML – Brass lacquered CR – Chrome CP – Polished chrome CPV – Chrome fully polished PS – Patinated black PB – Patinated brown
Optional usage feature	B01 – 2 key extracting positions 0°, 90° B03 – 2 key extracting positions 0°, -90°
Accessories	Spray FinLube
Security features	Locking authorisation request on up to 5 tracks with spring-loaded locking elements Durable length profile Specially shaped locking pins as scanning protection and picking protection Hardened HSS steel pins in the cylinder plug as drilling protection
Technical installation situation	Hole pattern larger than 22 mm rear mounted with a fastening plate locking cam according to dimensional drawing for use in showcases, furniture doors and other wooden boxes
Included components	Cam lock with mounted rectangular fixing plate
Product code	M.ICS.HB.MR22R.[Outside cylinder length A in mm].[Finish].[Option]
Example	ICS cam lock, 22 mm diameter, with fixing plate, nickel finish, length 25 mm, 2 key extracting positions at the bottom and left: M.ICS.HB.MR22R.25.NI.B01

Dimensional drawing

