

EMZY | Motorized cylinder Swiss round profile SY-MO

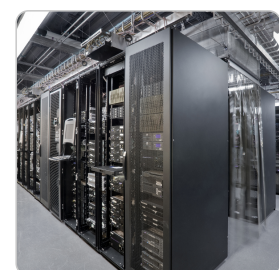
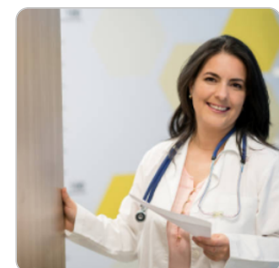


Product description

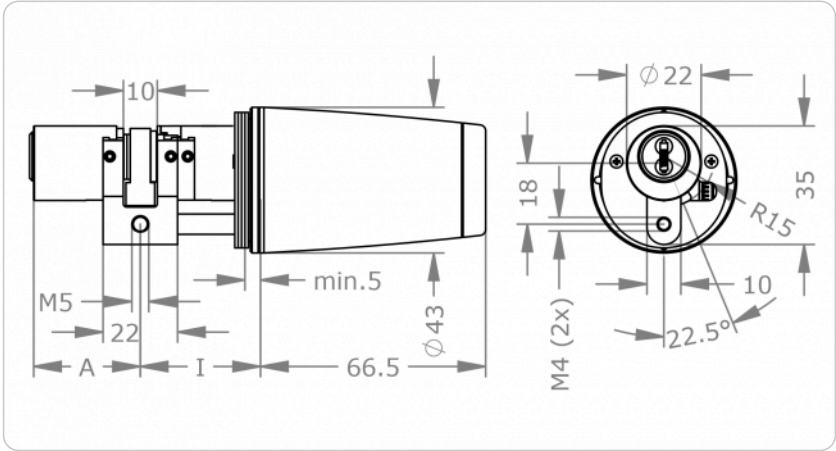
The EMZY motorised cylinder locks doors automatically. The I/O box enables control via third-party systems. The cylinder is controlled either via a wall reader, a code keypad or directly with the integrated push-button or locked/unlocked on the opposite side with an authorised key. Examples of applications are entrance doors, doors to sensitive areas or doors that must be open or closed at certain time intervals.

Technical information

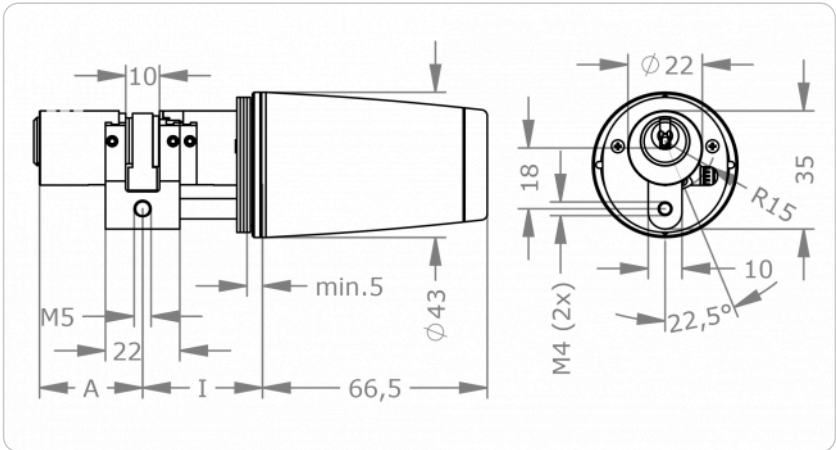
System	EMZY/Xesar EMZY/AirKey EMZY/MCSR EMZY/4KS EMZY/ICS
Cylinder length on the outside A in mm	31 36 41 + 5mm
Cylinder length on the inside I in mm	31 36 41 + 5mm (Akura: 30 35 40 + 5mm)
Finish	NI – Nickel NP – Polished Nickel MP – Polished brass PB – Patinated brown PS – Patinated black CR – Chrome
Thumbturn shape	EBT – EMZY Bluetooth
Thumbturn finish	K-NI – Nickel K-NP – Polished nickel K-MP – Polished brass K-PB – Patinated brown K-PS – Patinated black K-CR – Chrome
Cam	SEP – Euro profile SRP – Round profile BIF – Double cam Biffar® Z18 – Cogwheel cam Z18
Button colour	SW – Black WS – White
Additional certificate	SKG – SKG ** certified (ICS)
Accessories	I/O-Box Cable transition open Deadbolt contact, robust version magnetic reed contact EMZY connecting cable 4 m Terminal box Desktop power supply unit Power supply with top-hat rail for EMZY Timer Disassembly tool pin Bayonet disassembly tool
compatible locks	Single-turn and multi-point locks Mortise locks in accordance with DIN, ÖNORM
Security features	Single-turn and multi-point locks Mortise locks and screw-on locks suitable for installing locking cylinders in the round profile
Standards and guidelines	CE certified IP54 protection rating EN1634-2
Technical installation situation	Hardware-independent with minimum width of 40 mm Solid leaf or tubular frame doors Interior thumbturn Backset ≥ 35 mm with standard-compliant door installation according to ÖNORM B3850, DIN 1810
Power supply	Power supply unit 24 VDC, 60W
Conditions of use	Ambient temperature –20 °C to +70 °C Humidity < 90%, non-condensing IP 54 protection rating
Interfaces	Bluetooth 5.0 (BLE) RS485 Door contact Bolt contact Door button Operating mode switch
Signals	RGB LEDs for visual indication of locking/unlocking process, locking status, error status
Included components	EMZY motorised thumbturn cylinder Profile base disc 4 spacer discs Important information
Product code	E.[System].PZ.RMKZ-S.[Outside cylinder length A in mm/Inside cylinder length I in mm]. [Surface].[Thumbturn shape].[Thumbturn finish].[Option]
Example	E.EMZY/4KS.PZ.RMKZ-S.31/K36.NI.EBT.K-NI.Z10



Dimensional drawing



4KS



MCSR