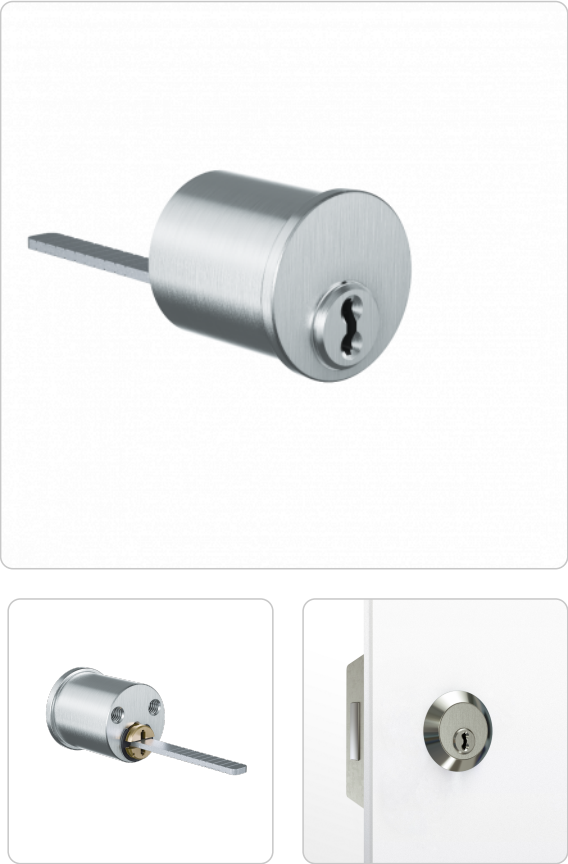


# 4KS Outside and inside cylinder | Rim cylinder 29 mm



## Product description

The 4KS rim cylinder AZ29.I063 is suitable for use on the outside of the door. It is equipped with a horizontal tail bar for surface mounted locks, fits a hole pattern larger than 29 mm and is secured on the rear side with throughhole screws. Potential applications are rim locks and surface mounted locks.

## Technical information

Finish	NI – Nickel   MP – Polished brass   NP – Polished Nickel   MS – Brass   ML – Brass lacquered   CR – Chrome   CP – Polished chrome   PS – Patinated black   PB – Patinated brown
Optional technical installation feature	API63 – Fixing plate IKON® 4063   R0I – Escutcheon IKON®
Door leaf thickness options	TS56 – Door thickness 46 up to 56 mm   TS66 – Door thickness 57 up to 66 mm   TS76 – Door thickness 67 up to 76 mm   TS86 – Door thickness 77 up to 86 mm
Optional usage feature	TXT – Customer-specific text
Accessories	Spray FinLube
Security features	Locking authorisation request in at least 18 scanning positions (authorisation positions)   12 springless, linear-controlled locking elements   Security elements made of tungsten carbide or hardened steel to prevent drilling and pulling
Technical installation situation	For use in IKON® rim locks up to door leaf thickness 45 mm
Included components	With escutcheon, tail bar and 2 fixing screws M6×28
Product code	M.4KS.AI.AZ29.I063.[Finish].[Option]
Example	4KS rim cylinder for Ikon rim locks type 63, nickel plated finish with fixing plate and escutcheon: M.4KS.AI.AZ29.I063.NI.API63.R0I

## Dimensional drawing

