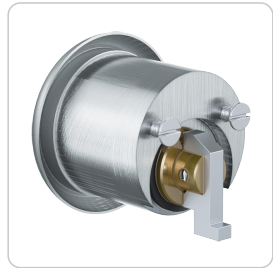


4KS Furniture cylinder | Furniture cylinder 28 mm



Product description

The 4KS furniture cylinder MR28 is suitable for use in furniture doors and drawers. It does not feature a cam bar on the rear. Depending on the lock case used, suitable for a hole pattern larger than 28 mm. It can be fastened to the lock at the rear using two screws. Application examples are stop-bolt locks and furniture locks for drawers and cabinets.

Technical information

Cylinder length on the outside A in mm	29 34 39
Finish	NI – Nickel MP – Polished brass NPV – Nickel fully polished MS – Brass NP – Polished Nickel MPV – Brass fully polished ML – Brass lacquered CR – Chrome CP – Polished chrome CPV – Chrome fully polished PS – Patinated black PB – Patinated brown
Optional technical installation feature	ERK[...] – Furniture lock ERK MAR[...] – Furniture Lock MAR UL – For furniture lock UNI4000 drawer UT – For furniture lock UNI4000 door
Optional usage feature	TXT – Customer-specific text
Accessories	Spray FinLube
Security features	Locking authorisation request in at least 18 scanning positions (authorisation positions) 12 springless, linear-controlled locking elements Security elements made of tungsten carbide or hardened steel to prevent drilling and pulling
Technical installation situation	For installation in furniture locks
Included components	Furniture cylinder with escutcheon, designed for MAR lock case
Product code	M.4KS.MZ.MR28.[Outside cylinder length A in mm].[Finish].[Option]
Example	4KS Furniture cylinder, diameter 28 mm, length 34 mm, nickel plated finish: M.4KS.MZ.MR28.34.NI

Dimensional drawing

