



# FPS

Branded quality at the best price





## FPS. Branded quality at the best price

FPS provides the best simple security and reliable convenience. FPS is suitable for master key systems with a more simple structure. Why opt for a master key system? Access all doors using only a single key – main entrance, front door, basement, letter box. The FPS key is also available as a design key in various colours.



---

### FPS benefits at a glance

- › One key fits all
  - › For simply structured master key systems
  - › Branded quality
  - › Patent protection until 2041 at the latest\*
- 

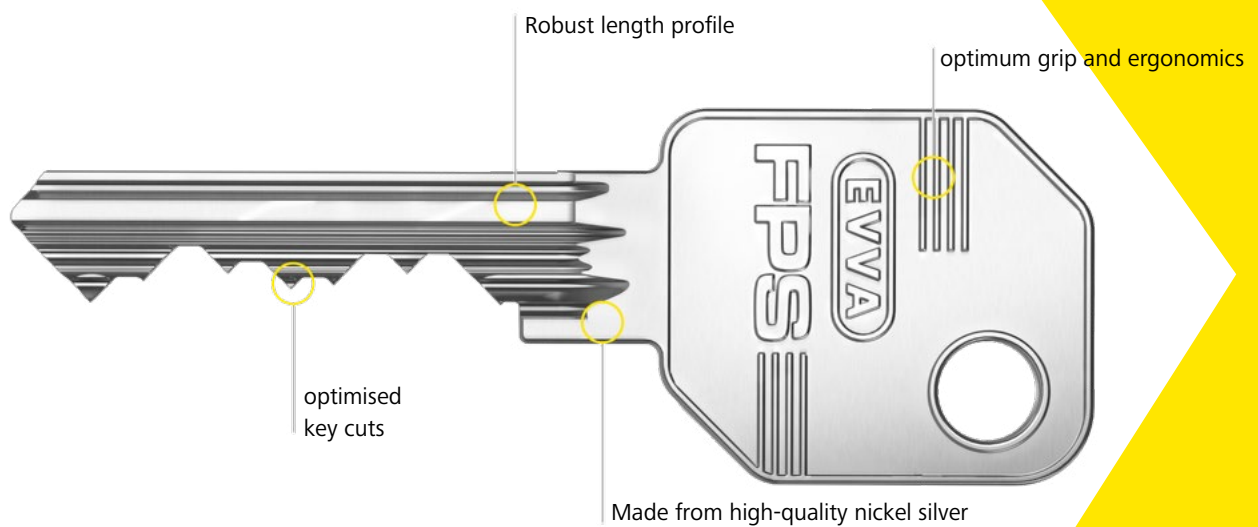
## The access system for simply structured master key systems

FPS is ideal for simply structured master key systems and clearly defined user groups. This includes on doors within residential complexes or office buildings. In cooperation with qualified partners, EVVA has been providing security technology for a hundred years.



## Branded quality at the best price

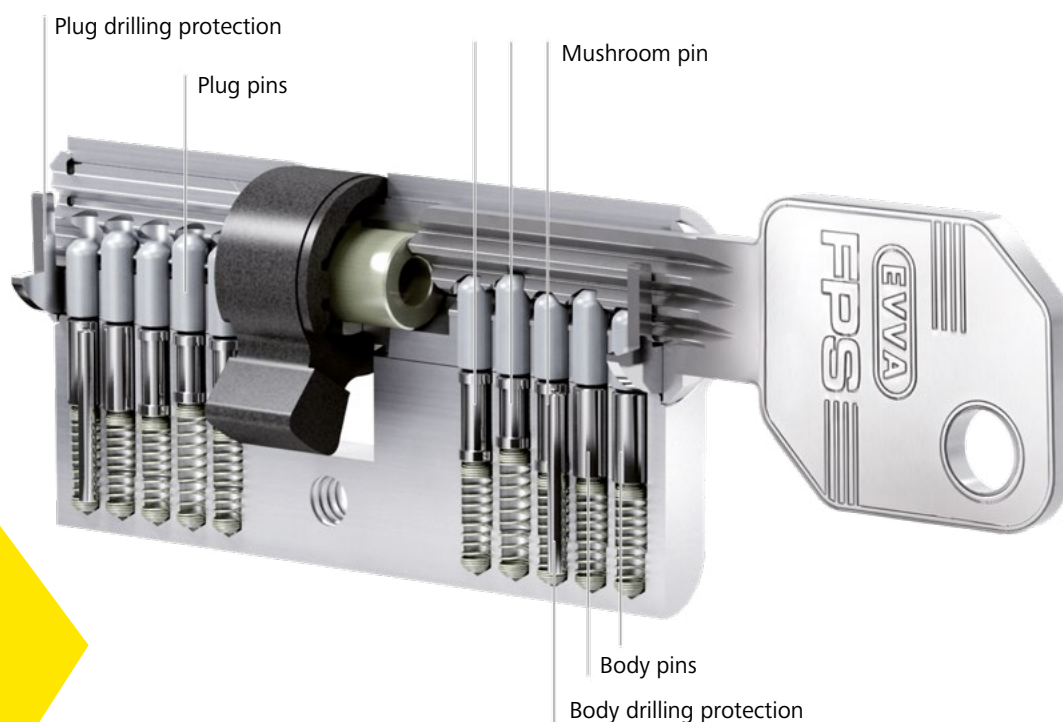
FPS features a spring-loaded pin tumbler system with 5 or 6 active, spring-loaded scanning elements. FPS keys are strong, non-wearing and durable, nickel silver keys. The authorisation features on FPS keys are verified at two levels in the cylinder lock. FPS cylinders are exclusively manufactured in compact design.



## Practical, handy and appealing

FPS keys are available in many different colours. The colour coding helps to easily distinguish between keys.





## All-round protection

Copy keys, additional cylinders and lock charts are available from authorised EVVA Partners only upon providing proof of legitimacy, i.e. the EVVA security card.



## Benefit from the security features

The reliable FPS cylinder technology offers lasting protection against illegal opening methods.

# FPS. Cylinders for every door requirement

Due to their features and numerous variants and options, FPS cylinder locks can handle all access situations required of a master key system. In this way, access to rooms and floors, access to cabinets and display cases, or the activation of barriers or other electronic installations can be clearly structured. This means even greater comfort and security.



## Double cylinder

are suitable for interior and exterior doors and can be equipped with numerous versions and options.



## Thumbturn cylinder

allows convenient opening and closing without keys.



## Furniture cylinder

make sure that important documents are securely archived.

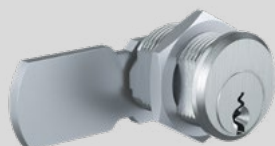






### **Half cylinder**

suitable for barriers, key switches, lifts and numerous other situations.



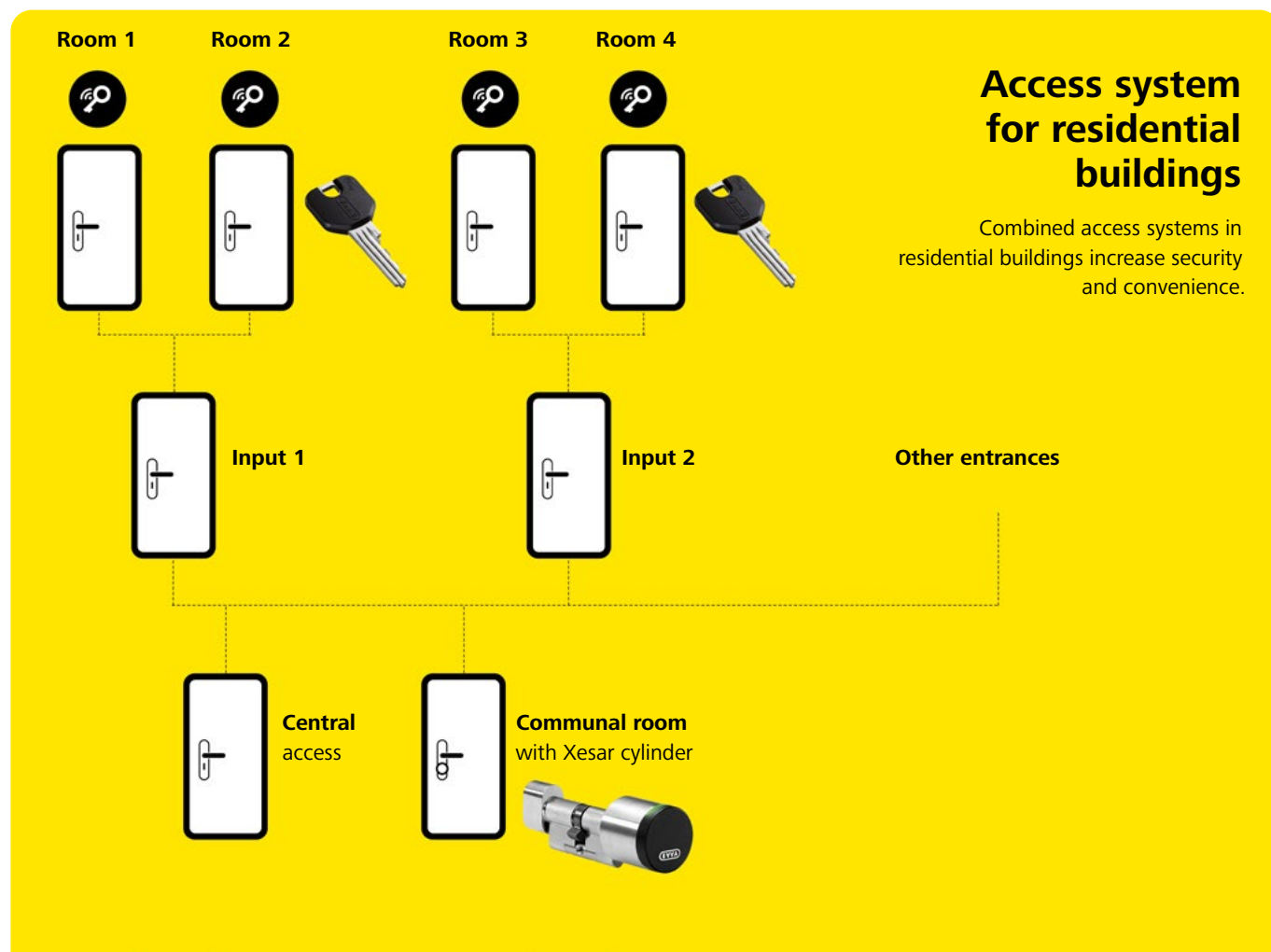
### **Cam lock**

for mailbox systems and for secure storage in showcases and display cabinets.



# FPS. Combined with electronic access systems

FPS can be perfectly combined with EVVA electronic access systems in a residential complex. Electronic access systems are primarily used on the perimeters of a facility and where event logs and time-limited access are important. Electronic and mechanical access components can be locked with just one key: the combi key.





## FPS. Simple, but good

At first glance, the main advantage of FPS appears to be its affordable price. At second glance, the patented, compact pin system also offers extremely reliable security for various applications.



### Security at two levels

The patented key profile system and solid locking pins form the two security levels.



# Unique EVVA service

Since 1919, EVVA services have been geared towards customer benefits. This has resulted in market-based products, the best product and consulting service for customers and partner as well as access system expertise that boosts customer convenience and gives operators a competitive, economic edge.



## Access systems from professionals

Access systems define who has access to which facilities. EVVA not only offers comprehensive expertise in planning access systems, but the company's range also includes high-performance access systems that are able to accommodate any level of complex authorisation structures.



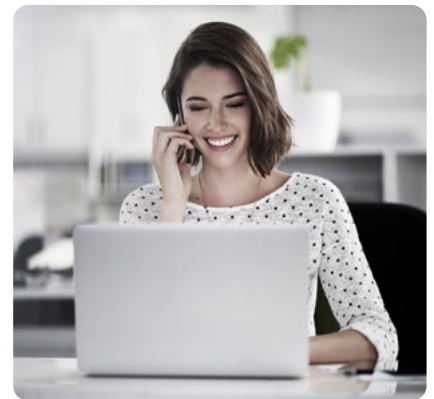
## Your EVVA Partner portal

Our Partner portal provides everything you as EVVA Partner need as part of your everyday activities: Price lists, catalogues, data sheets, and the option to sign up for training sessions.



## Mechanical and electronic access systems

Apart from EVVA, only a few manufacturers develop and produce their own mechanical and electronic systems in Vienna. EVVA customises these systems to create access solutions for use anywhere in the world



## Excellent advice

EVVA is your reliable partner. Be it for technical queries concerning EVVA products or planning issues regarding a project, you can always count on EVVA.

Innovation made in Austria.

Trust a family-owned business that has been researching, developing and producing for 100 years and operates in a respectful and cooperative way. EVVA – the European leader in mechanical and electronic access systems!



**[www.evva.com](http://www.evva.com)**