

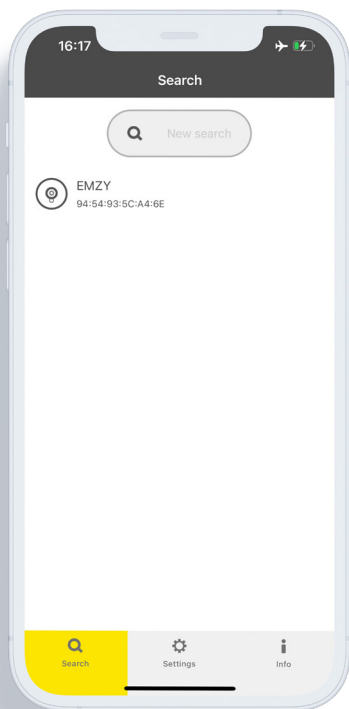


EMZY

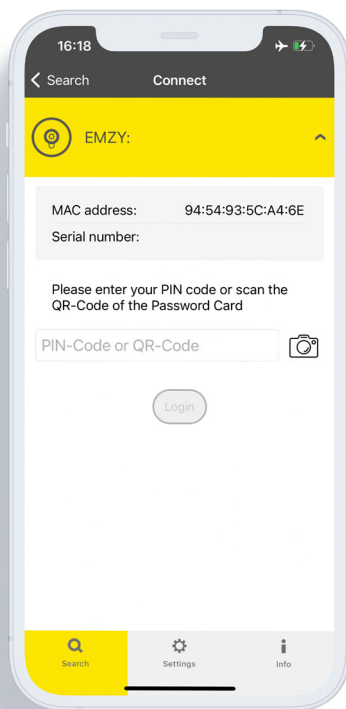
First steps



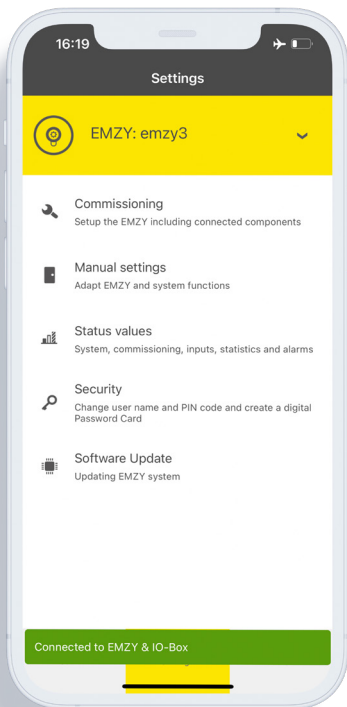
Launch the app



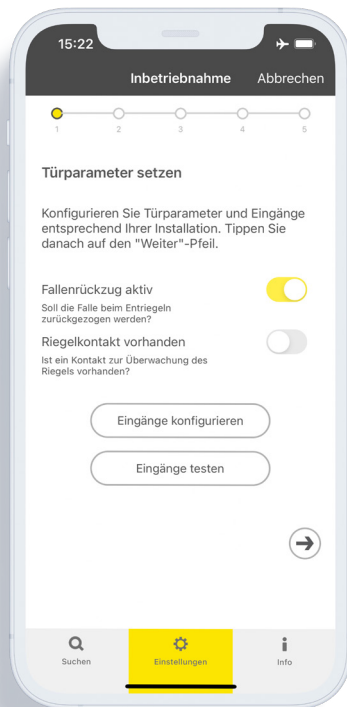
You will now see all EMZYs around you. Select the one you would like to configure.



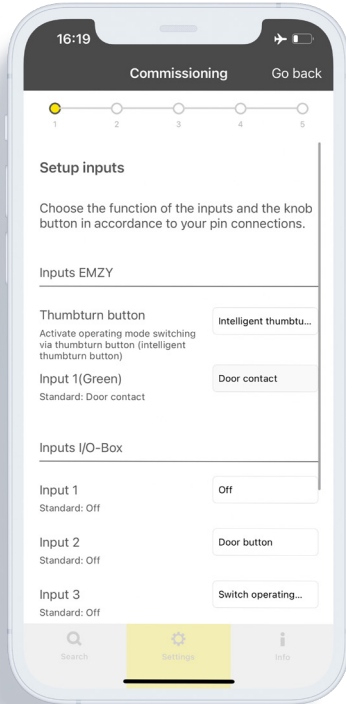
You can find the EMZY name, Mac address and password on the EMZY card.



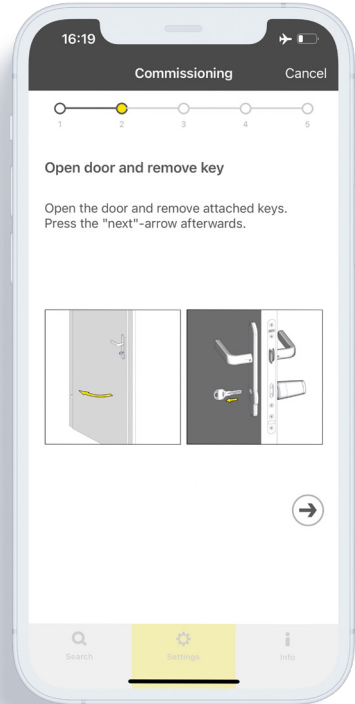
Start with commissioning to adapt EMZY to the installation situation.



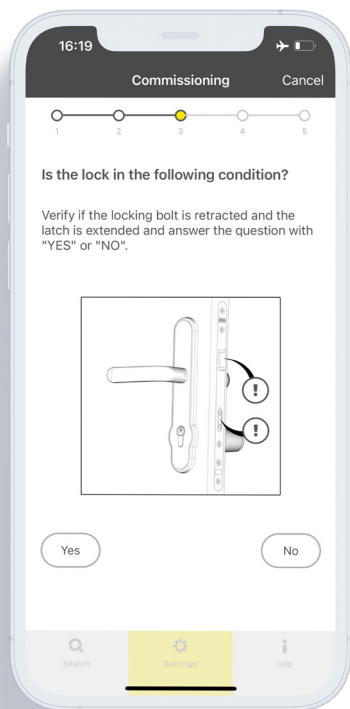
Now set the door-dependent parameters.



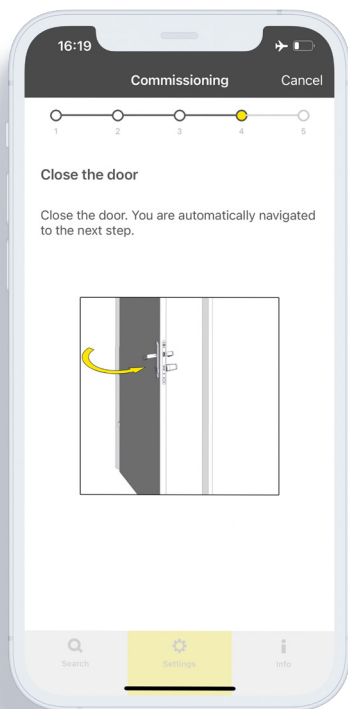
Adjust the other settings for the entrances.



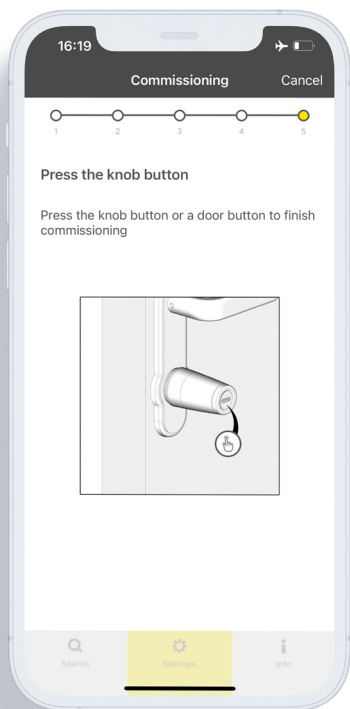
Open the door and remove the key.



Pay attention to the position of the latch and bolt.



Close the door.



Press the knob push button.



Done!



Highlights of the EMZY app

- › Activation of office mode
- › Transfer existing configurations to the new EMZY
- › Selection of visual signals for the knob push button
- › Selection of different alarm states

www.evva.com