

# Xesar








Commissioning Ethernet Adapter | Expert EX9132CST

# Table of contents

1	EXPLANATION OF SYMBOLS .....	3
2	COMMISSIONING THE XESAR-ONLINE WALL READER NETWORK ADAPTER EXPERT EX9132CST .....	4
2.1	PC configuration .....	4
2.2	Commissioning a Xesar network adapter .....	6
2.2.1	Status page .....	7
2.2.2	RS485/422 .....	8
2.2.3	Network .....	8
2.2.4	Resetting a network adapter: .....	10
3	TABLE OF FIGURES.....	11

# 1 Explanation of symbols

The following symbols are used in the system manual and are intended to support a better understanding:

Symbol	Meaning
	Attention, risk of material damage in the event of non-compliance with the corresponding safety measures.
	Notices and additional information
	Hints and recommendations
	Avoidance of errors and error messages
	Options
	Links
	Instruction steps

# 2 Commissioning the Xesar-Online Wall Reader Network Adapter EXPERT EX9132CST



Check that you have the appropriate model in use as per the setup guide before configuring the network adapter.

Additional network adapter commissioning instructions:



**EVVA Homepage Xesar Downloads**

Please contact your EVVA technical office if you have any questions or would like to obtain more information.

## 2.1 PC configuration

Any computer is suitable for configuring the Xesar network adapter. This can also be the PC on which the Xesar software is operated.

Please configure the settings of your PC network adapter before starting to commission the Xesar network adapter. For this purpose, e.g. in Windows 7 or Windows 10, go to Network and Sharing Center > Change adapter settings.

- » Open the Settings window (right-click the LAN connection)

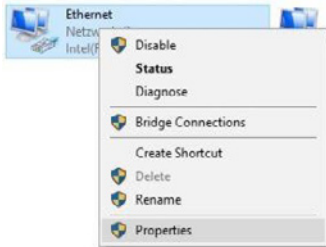


Figure 1: Windows adapter settings



Please note that additional active network connections (WiFi, etc.) may impair communication with the Xesar network adapter. Switch them off if necessary.

- In the window, select Internet protocol version 4 (TCP/IPv4) ❶ and click Properties ❷.

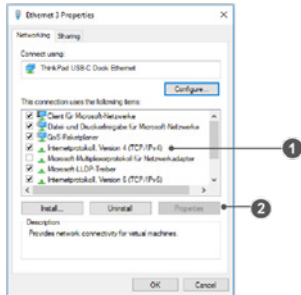


Figure 2: Windows - LAN connection

- The IP address and the subnet mask of the PC 1 must be configured in order to configure the Ethernet Adapter. Use the following addresses for this purpose:

IP address: 192.168.1.xxx (1-254)

Subnet mask: 255.255.255.0

DNS server: -

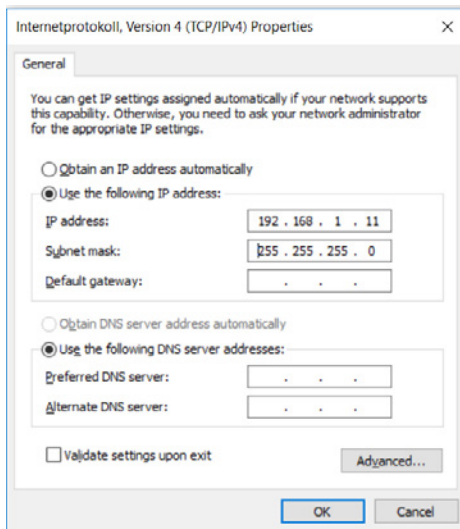


Figure 3: Windows – IP address (PC)



---

To avoid an IP address conflict, be careful **NOT** to use the default IP address of the Xesar network adapter (**192.168.1.100**). (If there is an IP address conflict, a connection can not be established.)

---



---

Please contact your system administrator if you encounter any issues during setup.

---

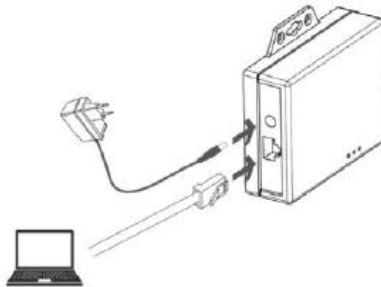
## 2.2 Commissioning a Xesar network adapter

- » Connect the mains adapter to the Xesar network adapter.

The green, flashing status LED indicates whether the Xesar network adapter is supplied with power.

- » Then connect the Xesar network adapter to the configuration PC.

For this purpose, use an RJ45 LAN cable and make sure the connector engages audibly in the socket.



*Figure 4: Xesar network adapter - connections*

- » Open the Internet browser on your computer.

- Enter the standard address of the Xesar network adapter in the browser's address bar – this can be found on the bottom of the device, it is set to **192.168.1.100** by default.

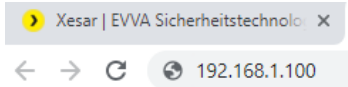


Figure 5: Xesar network adapter | IP address (updater)



If you cannot open the configuration page, check the firewall settings of your PC, the IP settings, and also the correct wiring of the Xesar network adapter.

**You will be directed to the system page of the Xesar network adapter.**

## 2.2.1 Status page

- On the status page, enter a password for security. This is optional and not absolutely necessary. The default administrator name used to login is "admin". No password has been assigned.
- The Device name can be individually configured and it does not influence the device function.
- The Login password restricts access to the device configuration page.

A default password has not been configured.

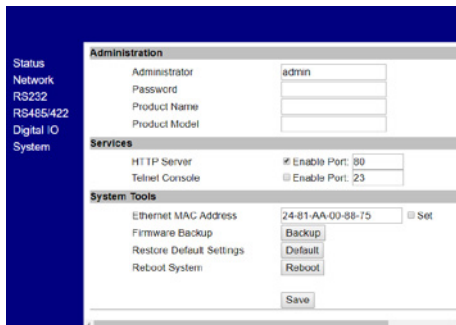


Figure 6: Xesar network adapter - Login

## 2.2.2 RS485/422

- ▶ In the "Remote Address /URL" field, enter the IP address of the PC or server on which the Xesar software is installed.

It is responsible for the communication between the Xesar network adapter and the Xesar software. It is important that the remote port (9081 by default) is the same as that specified in the Xesar Installation Manager (OCH Port).

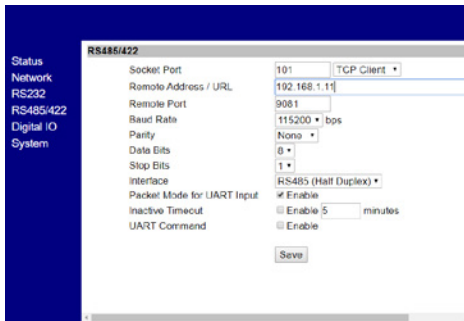


Figure 7: Xesar network adapter - RS485/422

## 2.2.3 Network

- ▶ On the Network page, the fields are to be filled in as shown below.

The IP address defines the IP address of the Xesar network adapter.



---

Please note: if the address is changed and **Save** is clicked (or by confirming with the ENTER key) then the network adapter can exclusively be opened and configured using this address.

---

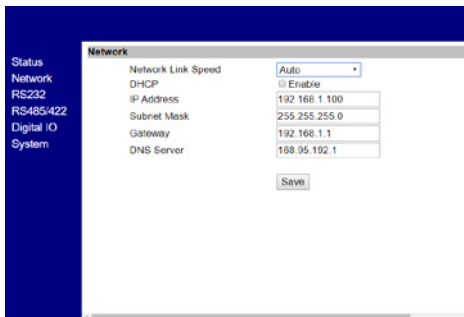
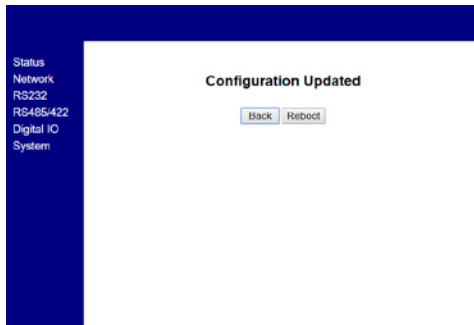


Figure 8: Xesar - network adapter - network



- » After having completed the parameter configuration, click **Save** to complete the Xesar network adapter configuration.
- » To transfer the data to the Xesar Ethernet Adapter, press "Reboot".



*Figure 9: Xesar network adapter - parameter settings*

- » After rebooting the network adapter, disconnect the Xesar network adapter from the configuration PC. Then connect the Xesar network adapter to the Xesar LAN network.

**Typically 150** different IP addresses can be defined for the Xesar network which means that you must define as many as **150** different IP addresses.

Also check the network settings of the PC and observe the valid IP address range of your network.

- The Subnet mask defines the subnet used.
- The Remote Address /URL corresponds to the IP address of the computer on which the Xesar software is operated. It is responsible for the communication between the Xesar network adapter and the Xesar software.  
It is important that the remote port (9081 by default) is the same as that specified in the Xesar Installation Manager (OCH Port).



---

The Remote IP (PC) and IP address (Xesar network adapter) are different! They must reside on the same network.

---

Sample configuration:

IP address	192.168.1.100
Subnet mask	255.255.255.0
Device Name	Adapter1
Login password	passwordadapter1
Remote IP	192.168.1.11

## 2.2.4 Resetting a network adapter:

If you have forgotten your set password or the Xesar network adapter does not work due to incorrect input data, you can reset the Xesar network adapter to the factory settings.

- ▶ Connect the mains adapter to the Xesar network adapter.
- ▶ Press the reset button for at least 5 seconds.

The password and settings are reset to the factory defaults.

- ▶ If you perform a reset of the Xesar network adapter in the event of an error, check the **parameter settings** again afterwards.



---

In this process, particularly check **Socket mode** (TCP client), **Baud rate** (115200) and **Port** (9081)!

---

### RS485/422

Socket Port	<input type="text" value="101"/>	TCP Client ▾
Remote Address / URL	<input type="text" value="192.168.1.11"/>	
Remote Port	<input type="text" value="9081"/>	
Baud Rate	<input type="text" value="115200"/>	bps

Figure 10: Port

### 3 Table of figures

<i>Figure 1: Windows adapter settings</i> .....	4
<i>Figure 2: Windows - LAN connection</i> .....	5
<i>Figure 3: Windows - IP address (PC)</i> .....	5
<i>Figure 4: Xesar network adapter - connections</i> .....	6
<i>Figure 5: Xesar network adapter   IP address (updater)</i> .....	7
<i>Figure 6: Xesar network adapter - Login</i> .....	7
<i>Figure 7: Xesar network adapter - RS485/422</i> .....	8
<i>Figure 8: Xesar - network adapter - network</i> .....	8
<i>Figure 9: Xesar network adapter - parameter settings</i> .....	9
<i>Figure 10: Port</i> .....	10

[www.evva.com](http://www.evva.com)