



Competence

Comprehensive expertise at EVVA

Universal competence

» *The competence and expertise at EVVA
are virtually limitless and diversified* «



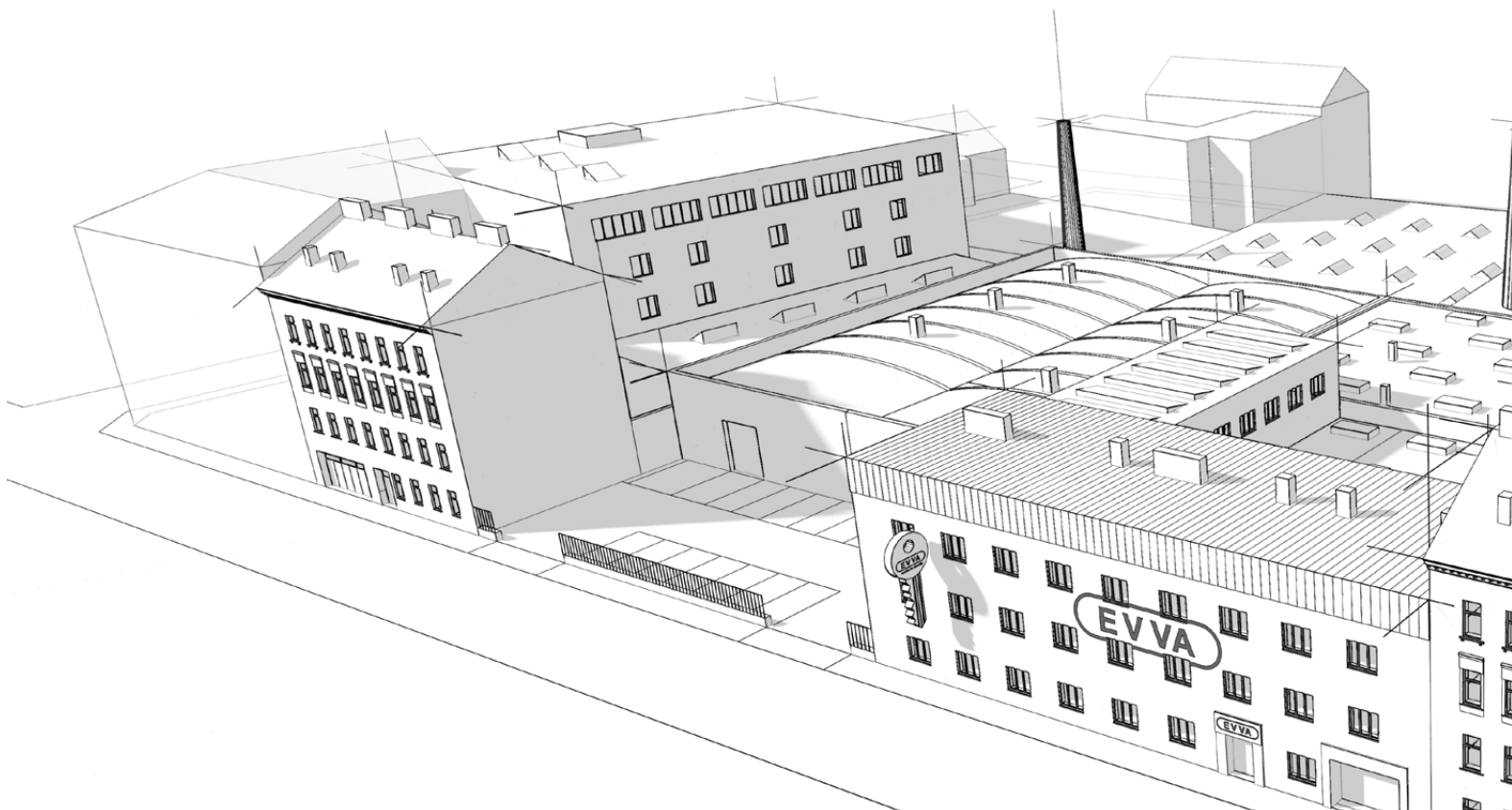
Innovation with tradition

A mechanical cylinder with temporary access function, an electronic locking system that actuates doors via smartphone, a motorised cylinder that locks automatically – the power of innovation is in the DNA of EVVA and it has been that way for nearly a hundred years.



Let the references speak for themselves

Hundreds of thousands of buildings have already been equipped with EVVA locking systems. More are used each day in all sectors and in all sizes.



Spirit of pioneering and research

Like Gyro Gearloose, EVVA continuously demonstrates its ingenuity and technical expertise.

The result is a steady flow of new innovative mechanical and electronic locking systems.



Knowledge developed since 1919

EVVA has been researching, developing and producing security technology since 1919. Excellent products, knowledge, experience and competence are the result.



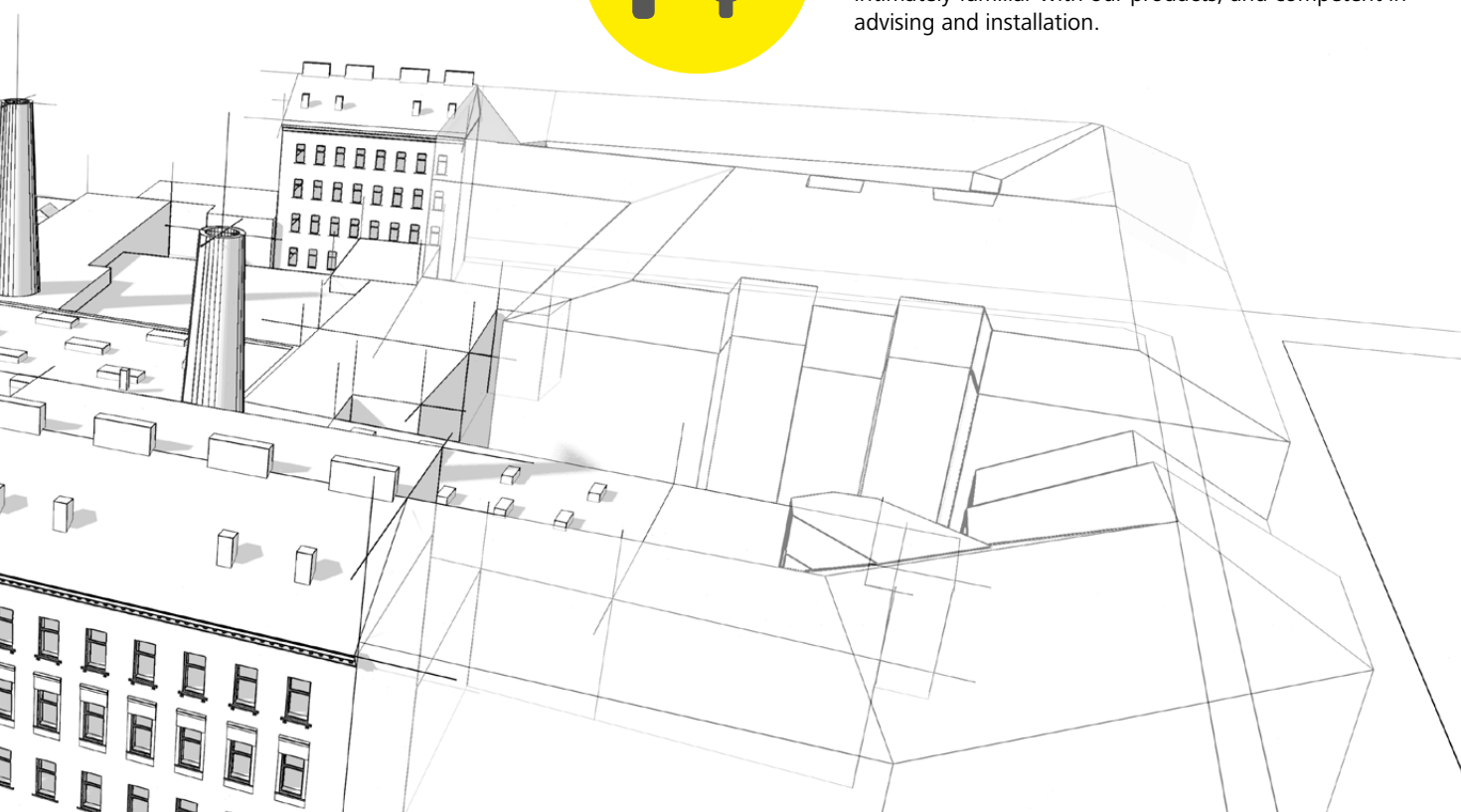
A steady flow of patents

The first EVVA patent dates back to 1937. EVVA received it for a cylinder padlock. Since then, EVVA has received 246 patents and continues to develop a steady flow of new patents. The latest patented achievement: the rotation brake for Xesar and AirKey cylinders.



Brand ambassador partners

Our numerous partners are the extended arm of EVVA. They are our most important brand ambassadors, are intimately familiar with our products, and competent in advising and installation.



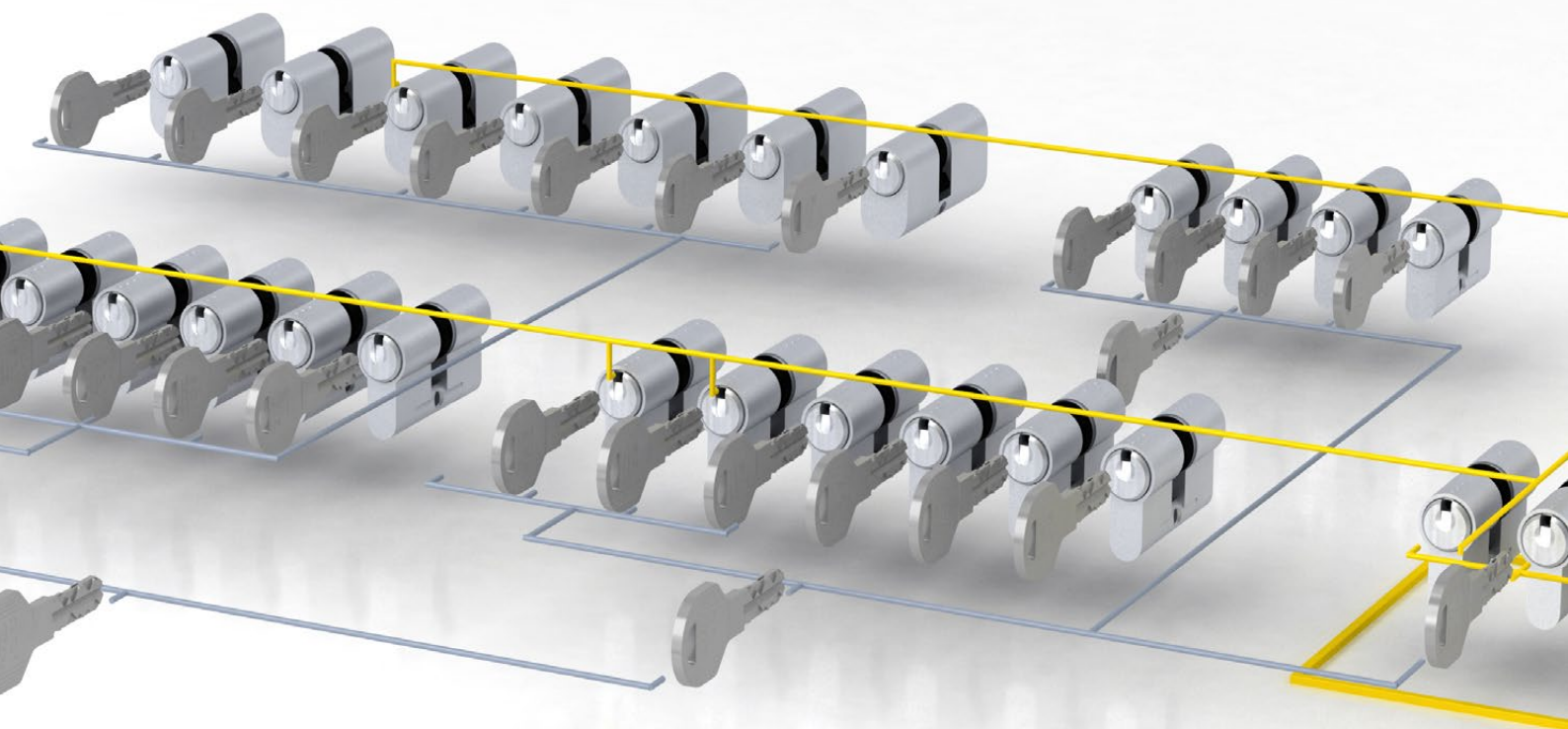
Master key system | reliable EVVA competence

Master key systems

*» Individual and unique –
one of EVVA's core competences «*

EVVA was founded in 1919. Since then, EVVA has established its name as a developer and producer of locking systems and as a competent and professional planner of master key systems. Countless references worldwide attest to this.

With nearly a century of experience as a security provider, EVVA is familiar with the typical security requirements of organisations and plans every locking system according to the individual requirements of customers and users. Not only that, EVVA also has two premium systems to realise even the most complex master key systems.



Master key system | What is it?

A master key system is a combination of cylinders and keys that perfectly reflects an organisational hierarchy. The major advantage of a master key system is the ability to lock and unlock several doors, mailboxes, lifts and cabinets in a building with a single key. This simplifies organisation, lightens the key ring and saves money.

The advantages of a master key system



Simple organisation

With only one key for multiple doors, you simplify key management and increase comfort while maintaining security.



Clear hierarchies

Your company organisation can be perfectly reflected with a master key system – the boss locks all doors and the employees only lock selected doors.

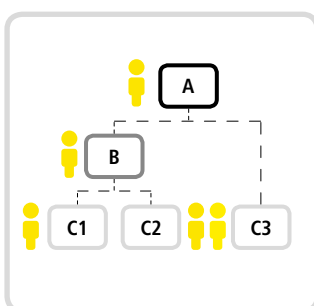


Better transparency

Last but not least, your key ring becomes smaller, thus easier to handle.

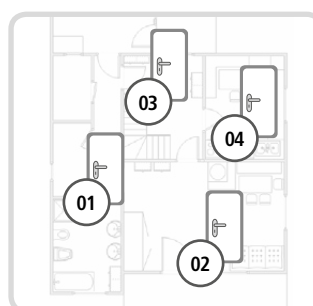
Creating a lock chart | Where to begin?

The planning of a locking system is preceded by asking who the user groups are and who should have access where. When these room-user-relationships have been defined, a lock chart can be created. The three steps to the lock chart:



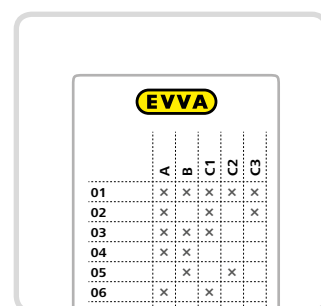
Defining users

User groups are defined based on the organisation of a company.



Specifying rooms

Rooms and areas with special security requirements are evaluated.



	A	B	C1	C2	C3
01	x	x	x	x	x
02	x	x	x	x	x
03	x	x	x	x	x
04	x	x	x	x	x
05	x	x	x	x	x
06	x	x	x	x	x

Creating a lock chart

The users, rooms and areas are taken into consideration – who can go where?

Master key system | reliable EVVA competence

Master key system types

Master key systems are increasingly oriented towards the requirements of customers and users. You reflect the functional organigramme of a company in the organisation and give, e.g. the CEO the possibility of locking all doors. In residential systems the focus is on comfort. Residents open the main entrance, common areas and their own apartment with a single key.



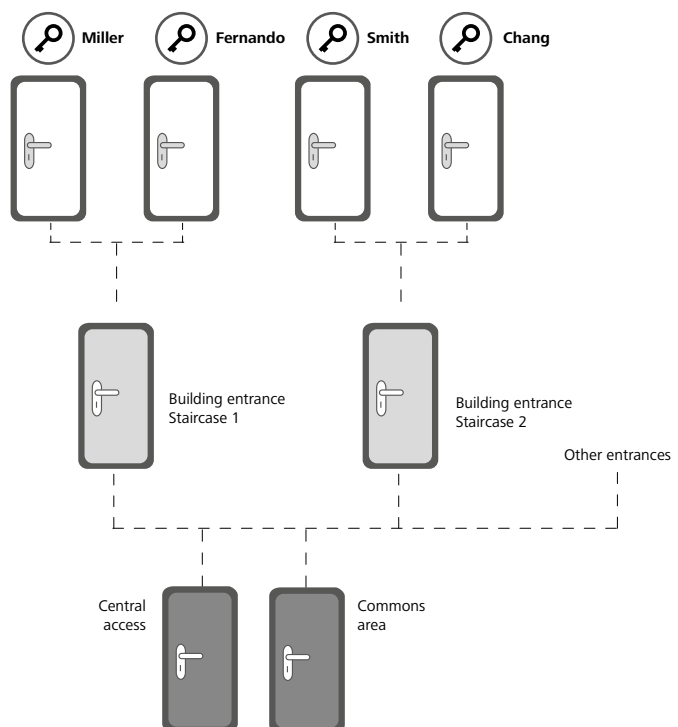
The mechanical master key system



The combined master key system

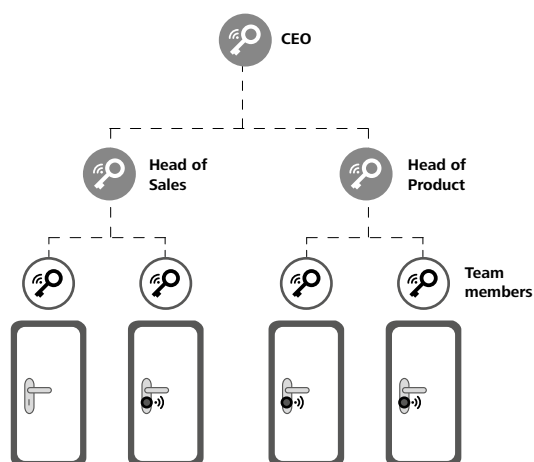
Master key system for residential buildings

The key feature of master key systems for residential buildings is that multiple individual keys can lock a central locking cylinder (e.g. the central access or the commons area). Garages and mailboxes can also be locked with the individual key. However, no resident can use his key to gain access to the apartment of other residents.



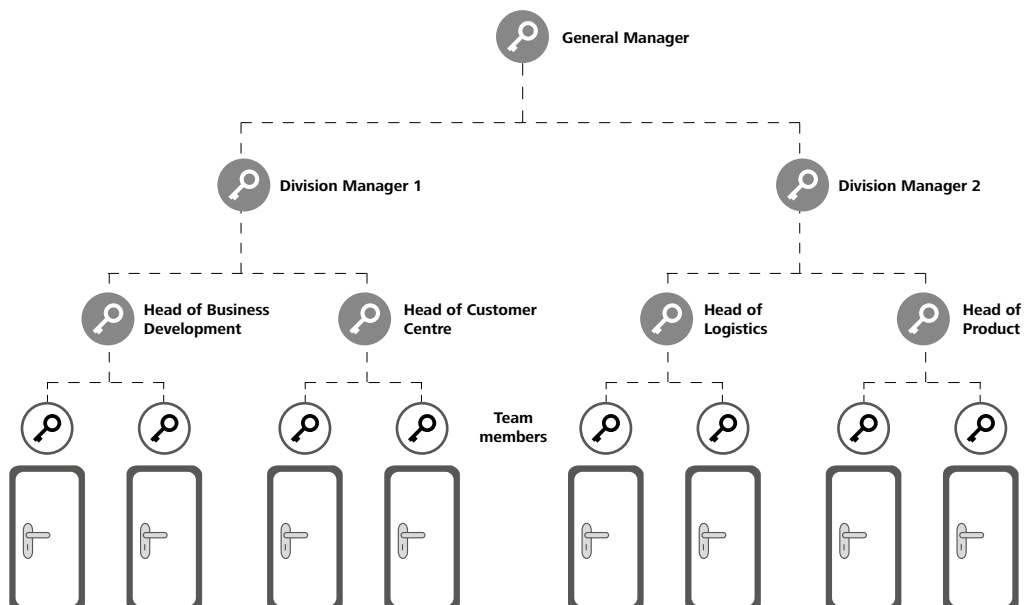
Combined master key system

The overall master key system combines mechanical and electronic components in a building. Electronic systems are primarily used on the perimeters of the building and where event logs and schedule-based access are important; interior doors are normally equipped with mechanical components. The combi key unites the two worlds of security.



Master key systems for companies

The aim of a master key system for a company is to replicate the functional organisation of an organisation. With its high-performance mechanical locking systems, EVVA can even replicate extremely complex organisational structures.



Cylinder types | multi-variant EVVA competence

Cylinder Types

*»Developed for the needs of the market
and customers«*



EVVA is known for being able to offer a variety of cylinder types in each individual master key system. In some systems this can exceed well over a hundred. Whether to accommodate the local circumstances and security requirements of a market or to use a single locking system from the entrance to an office building to the roller cabinet in the office. The reason is always the same: to best serve customer requirements.



Sustainability

» Competence developed over generations «



*» Clean production – reduced oil
and water consumption «*



*» Clean energy produced
internally «*

Clean production

Oil and water consumption for the production of EVVA products is continuously reduced. The proportion of clean production steadily increases at the headquarters in Vienna and in the other EVVA production locations. New machinery assures further sparing of resources in the production because the mechanical cylinder housing can also be dry-machined – i.e. without adding oil, lubricants or water.

Photovoltaics

In the summer of 2013 EVVA put the finishing touches on a very important project: the company's very own photovoltaic system on the roof of the Vienna headquarters. The solar energy that is produced is used exclusively for internal electricity requirements. The solar modules generate approximately 150,000 kilowatt hours of energy each year. This is equivalent to the annual electricity consumption of 40 single-family homes. Therefore, EVVA covers its basic energy consumption with this system.



»Cylinders! How big is your ecological footprint?«



»Sustainability – practice of the future«

Ecological footprint

It isn't enough that EVVA adheres to an internal resource-saving production policy. We also want to know how big the ecological footprint of our products is. Therefore, EVVA has joined other members of the sector to create an Environmental Product Declaration – EPD – for every product. This way, green buildings can be sure that their locking system is also green.

Sustainability outlook

Sustainability at EVVA is supported on three pillars: economy, ecology and people. And EVVA has a lot going on in all three areas. The ecological goal is entirely oil-free production and the use of photovoltaic systems in other company locations. The economic focus is on customer satisfaction and social pillar is geared toward employee motivation, healthcare and the protection of children.

www.evva.com

Submitted by